



10 JULY 2000

CHART COMMENTARY

by ALAN JONES



SINGLE FACTFILE

Five achieve their ninth straight Top 10 hit, their seventh top five success and their second number one this week as their *We Will Rock You* collaboration with Queen debuts at number one. It is in fact the first chart appearance for the track, which was the B-side of Queen's 1977 number two hit *We Are The Champions*. Its success brings to six Queen's tally of number ones, although only two of the group's four members appear on the single, with Brian May

contributing guitar and bass and Roger Taylor on drums. *We Will Rock You* sold fewer than 78,000 copies last week, the third lowest tally attained by a number one hit in the past six months. In reality, it was not the week's biggest seller anyway - Ronan Keating's *Life Is A Rollercoaster*, which finished up about 3,000 sales adrift achieved that feat, although many of its sales had to be discounted, as explained elsewhere on this page.

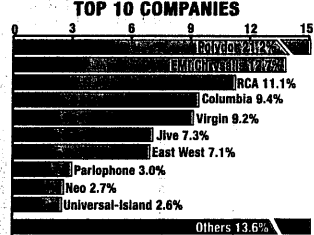
MARKET COMMENTARY

Five and Queen are officially number one this week with *We Will Rock You* although Ronan Keating's *Life Is A Rollercoaster* is undoubtedly still the best-seller, and loses pole position simply because a significant number of its sales - those of the CD containing the multimedia CD-Rom interview with Keating - have been discounted.

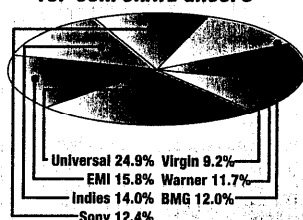
Although the CD - deemed illegal because the interview is a unique track and not an enhancement of one of the audio tracks - was deleted very early, it still accounted for a massive 51.4% (100,069 units) of sales of *Life Is A Rollercoaster* last week. The record's overall tally of 194,527 sales is the third highest of the year, trailing only *All Saints' Pure Shores* - which sold 199,084 copies in the week of its release in February - and *Sonique's It Feels So Good* - which moved 195,306 copies at the end of May.

Stocks of the discounted CD are becoming

MARKET REPORT



TOP CORPORATE GROUPS



Figures show top 10 companies by % of total sales of the Top 75; and corporate group shares by % of total sales of the Top 75

SALES UPDATE



PERCENTAGE OF UK ACTS IN THE CHART

UK: 63.3% US: 28.0% Other: 18.7%

progressively more depleted but they still accounted for 14,000 sales - slightly more than a third of the total - in the first four days

of last week. Although no figure is yet available for the full week, those extra 14,000 sales alone would have more than

guaranteed Keating a second week at number one.

While former Eternal colleagues Easther and Vernell Bennett are currently without a recording contract, Louise, who left the group in 1995, is going from strength to strength. The star, who is married to soccer player Jamie Redknapp, registers her ninth solo hit with *2 Faced* this week. Its number three debut instantly makes the record her biggest success, beating the number four peak of 1997's *Arms Around The World* and the number four peaks of *Stay and Oh! Baby*, two early Eternal hits on which she featured.

Aussie duo *Savage Garden's* *Affirmation* album yields its fourth and biggest hit this week, with the title track debuting at number eight. Earlier hits from the album, which has sold more than 230,000 copies, are *The Animal Song* (number 16), *I Knew I Loved You* (10) and *Crash And Burn* (14).

INDEPENDENT SINGLES

| This | Last | Title | Artist | Label (distributor) |
|------|------|------------------------------------|---------------------------|---------------------------------------|
| 1 | NEW | SING A LONG | Shanks & Bigfoot | Pepper 9230232 (P) |
| 2 | 1 | SANDSTORM | Darude | Neo NEOCD 033 (V) |
| 3 | 3 | WHEN I SAID GOODBYE/SUMMER OF LOVE | Steps | Ebu/Jive 9201162 (P) |
| 4 | 2 | SUNDAY MORNING CALL | Oasis | Big Brother RKIDSCD 004 (3MV/P) |
| 5 | 4 | I'LL NEVER STOP | 'N-Sync | Jive 9250762 (P) |
| 6 | 6 | AMAZED | Lonestar | Grapevine/BMG 74321742582 (RMG/BMG) |
| 7 | 5 | OOOH | De La Soul feat. Redman | Tommy Boy TB CD 2102B (P) |
| 8 | NEW | ATMOSPHERE | Kayestone | Distinctive DISNCD 62 (P) |
| 9 | 7 | THE POWER OF LOVE | Frankie Goes To Hollywood | ZTT ZTT 150CD (P) |
| 10 | 8 | NEIGHBOURHOOD | Zed Bias | Locked On/XL Recordings LDX 122CD (V) |
| 11 | 9 | GOOD THING GOING | Sid Owen | Mushroom MUSH74CDSX (3MV/P) |
| 12 | 11 | OOPS!...I DID IT AGAIN | Britney Spears | Jive 9250542 (P) |
| 13 | 10 | PORCELAIN | Moby | Mute LDCMUTE 252 (V) |
| 14 | NEW | TOM'S DINER | Kenny Blake | Club Tools 0112165 CLU (V) |
| 15 | 13 | THE ONE | Backstreet Boys | Jive 9250662 (P) |
| 16 | 16 | SEX BOMB | Tom Jones & Mousse T | Gut CXGUT 33 (V) |
| 17 | 18 | DODDS NIGHT | Azzido Da Bass | Club Tools 0067285 CLU (P) |
| 18 | 12 | CEMENTED SHOES | My Vitriol | Infectious INFECT 89CDS (V) |
| 19 | 17 | SANDWICHES | Detroit Grand Pu Babs | Jive Electro 9230252 (P) |
| 20 | 14 | ANOTHER DAY | Skip Raiders feat. Jada | Perfecto PERF 4CDS (3MV/P) |

All charts © CIN

PEPSI Chart

| This | Last | Title Artist | Label | This | Last | Title Artist | Label |
|------|------|-------------------------|-------------------------------------|--------------------|------|------------------------------------|--|
| 1 | NEW | WE WILL ROCK YOU | Five & Queen | RCA | 21 | SANDSTORM | Darude |
| 2 | 1 | LIFE IS A ROLLERCOASTER | Ronan Keating | Polydor | 22 | SING-A-LONG | Shanks & Bigfoot |
| 3 | NEW | 2 FACED | Louise | 1st Avenue/EMI | 23 | WHEN I SAID GOODBYE/SUMMER OF LOVE | Steps |
| 4 | 3 | THE REAL SLIM SHADY | Eminem | Interscope/Polydor | 24 | GROOVEJET (IF THIS AIN'T LOVE) | Splitter |
| 5 | NEW | JUMPIN' JUMPIN' | Destiny's Child | Columbia | 25 | I TURN TO YOU | Melanie C |
| 6 | 2 | BREATHLESS | The Corrs | Atlantic | 26 | SUMMER OF LOVE | Lonyo: Comme Ci Comme Ca |
| 7 | 4 | TAKE A LOOK AROUND... | Limp Bizkit | Interscope/Polydor | 27 | SUNDAY MORNING CALL | Oasis |
| 8 | NEW | AFFIRMATION | Savage Garden | Columbia | 28 | YOU SEE THE TROUBLE WITH ME | Black Legend |
| 9 | 5 | WILL I EVER | Alice Deejay | Positiva | 29 | YELLOW | Coldplay |
| 10 | 5 | TRY AGAIN | Aaliyah | Virgin | 30 | SEX BOMB | Tom Jones And Mousse T |
| 11 | 11 | IT FEELS SO GOOD | Sonique | Serious/Universal | 31 | I NEED YOUR LOVIN' | Marc Et Claude |
| 12 | 12 | SPINNING AROUND | Kylie Minogue | Parlophone | 32 | NEW OUT OF YOUR MIND | Tue Steppers & Dana Bowers feat. V Beckham Ndle/Arista |
| 13 | 13 | WOMAN TROUBLE | Ardal Dodge & R Craig feat. C David | Public Demand/fir | 33 | REACH S Club 7 | |
| 14 | 14 | SHACKLES (PRAISE YOU) | Mary Mary | Columbia | 34 | IT'S MY LIFE | Bon Jovi |
| 15 | 15 | GOTTA TELL YOU | Samantha Mumba | Wild Card/polydor | 35 | WHY DIDN'T YOU CALL ME | Macy Gray |
| 16 | 16 | WHEN A WOMAN | Gabrielle | Go Beat/polydor | 36 | I TURN TO YOU | Christina Aguilera |
| 17 | 18 | ROCK DJ | Robbie Williams | Chrysalis | 37 | MARIA MARIA | Santana |
| 18 | 18 | BABYLON | David Gray | IHT/East West | 38 | I THINK I'M IN LOVE WITH YOU | Jessica Simpson |
| 19 | 19 | 7 DAYS | Craig David | Wildstar | 39 | THERE YOU GO | Pink |
| 20 | 17 | DON'T CALL ME BABY | Madison Avenue | VC Recordings | 40 | NEVER BE THE SAME AGAIN | Melanie C/Lisa Loth Eye Lopes |

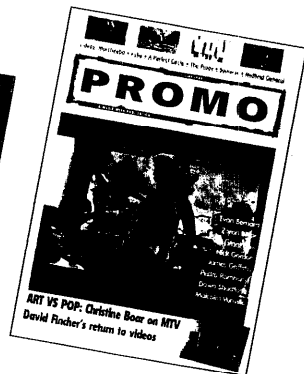
© CIN/Music Control

PROMO is the essential insider's guide to the international music video industry. Each month PROMO features promo of the month, news, airplay charts, contacts and much more.

PROMO SPECIAL OFFER who shoots what?

Take out a year's subscription to PROMO and get two essential contact guides for FREE.

- The Directors' Directory 1999-2000 lists an A-Z of UK, US and German directors →
- Who Shot What in '99 provides contacts for all involved with videos shot throughout 1999. →



HURRY - offer open for a limited period only

For more information, contact Shane on tel: +44 (0)20 7940 8605, e-mail: sdoherty@unmf.com, or fax: +44 (0)20 7407 7087

TOP 75

| The | Last | Title | Label/CD (Distributor) |
|----------|-------------------|--|--|
| Wks | Artist (Producer) | Cass/Viny/VMD | |
| 1 | NEW | IN BLUE ★ | Parlophone 5277832 (E) |
| 2 | 9 | THE MARSHALL MATHERS LP ★ | Interscope/Polydor 4906282 (U) |
| 3 | 1 | PARACHUTES ● | Parlophone 5277832 (E) |
| 4 | 3 | WHITE LADDER ★ | IHT/East West 8573829832 (TEN) |
| 5 | 4 | PLAY ★3 | 1 Mute CDSTUMM 172 (V) |
| 6 | 5 | THE GREATEST HITS ★ | 2 Anista 74321757392 (BMG) |
| 7 | 6 | FRAGMENTS OF FREEDOM ● | East West 8573829832 (TEN) |
| 8 | NEW | WHO NEEDS GUITARS ANYWAY | Positiva 5270010 (E) |
| 9 | 7 | RISE ★2 | Go Beat/Polydor 5477682 (U) |
| 10 | 8 | 7 | Polydor 5438572 (U) |
| 11 | 9 | RELOAD ★3 | 1 Gut GUTCD 009 (V) |
| 12 | 11 | SLAVE TO LOVE | Virgin CDV 2921 (E) |
| 13 | 10 | OOPS! I DID IT AGAIN ★ | Jive 9220392 (P) |
| 14 | 14 | SUPERNATURAL ★ | 4 Arista 07822190802 (BMG) |
| 15 | 10 | ALONE WITH EVERYBODY ● | Hut/Virgin CDHUTX 63 (E) |
| 16 | 12 | THE MAN WHO ★7 | 2 Independiente ISOM 90CDX (TEN) |
| 17 | 18 | SLIM SHADY ● | Interscope/Polydor INC 90321 (U) |
| 18 | 17 | CRUSH ● | 1 Mercury 5425622 (U) |
| 19 | 13 | BRAND NEW DAY ★ | 1 A&M/Polydor 4904512 (U) |
| 20 | 22 | STANDING ON THE SHOULDER OF GIANTS ★2 | 1 Big Brother RKO CD02 (3M/P) |
| 21 | 19 | 2001 ● | Interscope/Polydor 4904862 (U) |
| 22 | 23 | STEPACULAR ★4 | 1 Ebu/Jive 0519442 (P) |
| 23 | 29 | THE WRITING'S ON THE WALL ● | Columbia 4943942 (TEN) |
| 24 | 28 | NORTHERN STAR ★ | 1 Virgin CDVX 2893 (E) |
| 25 | 15 | TWENTY FOUR SEVEN ★ | 1 Parlophone 5231802 (E) |
| 26 | 20 | ONKA'S BIG MOKA ● | S2 4947802 (TEN) |
| 27 | 30 | SOGNO ★ | Sugar/Polydor 5472212 (U) |
| 28 | 34 | CALIFORNATION ★ | 1 Warner Bros 9362473862 (TEN) |
| 29 | 31 | THINGS TO MAKE AND DO ● | Echo ECHCD 31 (P) |
| 30 | 24 | COME ON OVER ★10 | 6 Mercury 1700812 (U) |
| 31 | 21 | RIDING WITH THE KING ○ | Reprise 9362476122 (TEN) |
| 32 | 42 | AFFIRMATION | 1 Columbia 4949352 (TEN) |
| 33 | 26 | THE PLATINUM ALBUM ● | Positiva 5259530 (E) |
| 34 | 27 | ENEMA OF THE STATE ● | MCA/Uni-Island MCD11950 (U) |
| 35 | 25 | WESTLIFE ★3 | 1 RCA 74321713212 (BMG) |
| 36 | 33 | ON HOW LIFE IS ★4 | 2 Epic 4944232 (TEN) |
| 37 | 36 | GOLD - GREATEST HITS ★12 | Polydor 5170072 (U) |
| 38 | 32 | NOCHE DE CUATRO LUNAS | Columbia 4974222 (TEN) |
| 39 | 48 | LIVE AT THE GREEK SPV | SPV Recordings SPV 09172022 (KO) |
| 40 | 52 | INVINCIBLE ★ | 1 RCA 74321713922 (BMG) |
| 41 | 38 | INVINCIBLE SUMMER | Warner Brothers 9362476052 (TEN) |
| 42 | 51 | FORGIVEN, NOT FORGOTTEN ★ | 2 Atlantic 7567926122 (TEN) |
| 43 | 53 | THE BARRY WHITE COLLECTION ★3 | Universal TV 8347902 (U) |
| 44 | 46 | AUTOMATIC FOR THE PEOPLE ★6 | Warner Bros 9362451222 (TEN) |
| 45 | 41 | GLADIATOR - OST | Decca 4670942 (U) |
| 46 | 49 | THE HOUR OF BEWILDERBEAST | XL Recordings TXNLCD 133 (V) |
| 47 | 39 | CLASSIC SINATRA ○ | Capitol 5235022 (E) |
| 48 | 50 | BABY ONE MORE TIME ★3 | 4 Jive 0522172/0522174/- (P) |
| 49 | 44 | INSPIRATION ● | Universal TV 1578612 (U) |
| 50 | 63 | SIGNIFICANT OTHER | Interscope IND 90335 (E) |
| 51 | 47 | TALK ON CORNERS ★9 | 5 Atlantic 7567831062/7567831064/- (TEN) |
| 52 | 59 | LEGEND ★6 | Tuff Gong BMWCD 1/BMWX 1/BMWX 1/- (U) |
| 53 | 35 | OUT OF TIME ★5 | Warner Bros 7599264962 (TEN) |
| 54 | 37 | RUMOURS ★10 | Warner Bros K 256344 (TEN) |
| 55 | 55 | UNLEASH THE DRAGON ● | Def Soul 5469392 (U) |
| 56 | 40 | JAGGED LITTLE PILL ★9 | Maverick/Reprise 9362459012 (TEN) |
| 57 | 58 | S CLUB ★2 | 1 Polydor 5431032 (U) |
| 58 | 56 | THE HEAT ● | LaFace/Arista 73008260692 (BMG) |
| 59 | 71 | BIG CALM ★ | Indochina ZEN 017CDX (P) |
| 60 | 68 | KALEIDOSCOPE ○ | Virgin CDVUS167 (E) |
| 61 | 54 | GREATEST HITS/SHINING LIKE A NATIONAL GUITAR ● | Warner Bros (TEN) |
| 62 | 69 | RAY OF LIGHT ★5 | 6 Maverick/Warner Bros 9362468472/9362468474 (TEN) |
| 63 | 45 | YOU'VE COME A LONG WAY, BABY ★3 | 1 Skit BRASSIC 11CD (3M/P) |
| 64 | 43 | THE BEST OF ROD STEWART ★5 | Warner Bros K 9260342/WX 314C/WX 314 (TEN) |
| 65 | 57 | ALL THE WAY...A DECADE OF SONG ★2 | 4 Epic 4960942 (TEN) |
| 66 | 61 | LEFTISM ★ | Hard Hands/Columbia HANDMC 2 (TEN) |
| 67 | 66 | THE WOMAN IN ME ★ | Mercury 5228862 (U) |
| 68 | RE | MY WAY - THE BEST OF ★ | Reprise 9362467122 (TEN) |
| 69 | 70 | THE BEST OF ME ★ | 1 Mercury/A&M 4905252 (U) |
| 70 | RE | HEART & SOUL - NEW SONGS FROM ALLY MCBEAL ● | Epic 4950912 (TEN) |
| 71 | RE | BLOOD SUGAR SEX MAGIK ★ | Warner Bros 7599268012 (TEN) |
| 72 | 67 | TRACY CHAPMAN ★3 | Elektra K 9607742 (TEN) |
| 73 | NEW | WHO IS JILL SCOTT? | Epic 4986252 (TEN) |
| 74 | 60 | MILLENNIUM ★ | 2 Jive 0523222 (P) |
| 75 | RE | BUENA VISTA SOCIAL CLUB ● | World Circuit WCD 050 (P) |

PLATINUM (300,000) GOLD (100,000) SILVER (50,000)
 * Awards are made on combined unit sales of cassettes, CDs, LPs, Minidiscs and DVD. LPs and cassettes with a published dealer price of £3.49 or below and CDs of £5.99 or below require twice the sales quantity quoted above to obtain an award.
 © CIN. Produced with BPI and BARD cooperation. Compiled from actual sales last Sunday - Saturday in a panel of more than 4,000 stores across the UK

TOP COMPILATIONS

| The | Last | Title | Label/CD/Cass/Viny/MD (Distributor) |
|----------|------------|---|--|
| Wks | Artist | | |
| 1 | NEW | KISS CLUBBLE SUMMER 2000 | Universal TV 5601122/5601124/- (U) |
| 2 | 3 | FRESH HITS - VOL 1 ● | warner.esp/Global TV/Sony TV WMMCD008/WMMCD008/- (TEN) |
| 3 | 2 | SMASH HITS SUMMER 2000 | Virgin/EMI VTDCCD315/VTDMC315/- (E) |
| 4 | 4 | PURE GARAGE II ○ | warner.esp WMMCD007/WMMCD007/- (TEN) |
| 5 | 5 | AVIA NAPA THE ALBUM - SHANKS & BIGFOOT | Ministry Of Sound MOSCD10/MOSMCIQ/- (3M/V/TEN) |
| 6 | 6 | CLUB MIX IBIZA 2000 ★ | Universal TV 5246822/5246824/- (U) |
| 7 | 7 | TOP OF THE POPS 2000 VOL. 2 ● | Universal TV 52468972/52468974/- (U) |
| 8 | 11 | THE BEST SUMMER HOLIDAY EVER | Virgin/EMI VTDCCD307/VTDMC307/- (E) |
| 9 | 9 | CIGARETTES AND ALCOHOL ● | Columbia SONYTV 87/CDSONYTV 87MC/-/SONYTV 87MD (TEN) |
| 10 | 10 | NOW THAT'S WHAT I CALL MUSIC! 45 ★2 | EMI/Virgin/Universal CDNOW45/TCNOW45/-/MDNOW45 (E) |
| 11 | 8 | STREET VIBES 5 | Sony TV/Global TV RADCD 161/RADMC 161/- (TEN) |
| 12 | 12 | MISSION IMPOSSIBLE 2 (OST) | Hollywood/Edel 0109052HWR/- (P) |
| 13 | 14 | THE BEST PUB JUKEBOX IN THE WORLD EVER | Virgin/EMI VTDCCD 308/VTDMC 308/- (E) |
| 14 | NEW | SUMMER BREEZE | Columbia SONYTV89CD/SONYTV89MC/-/SONYTV89MD (TEN) |
| 15 | NEW | RESPECT | warner.esp/Universal TV 5248624/5248634/- (TEN) |
| 16 | NEW | TRASHED IN IBIZA | Global TV RADCD 169/RADMC169/- (BMG) |
| 17 | 13 | HEADRUSH | Global TV RADCD168/RADMC168/- (BMG) |
| 18 | NEW | CREAM RESIDENT - SEB FONTAINE | Virgin/EMI VTDCCD308/VTDMC308 (E) |
| 19 | NEW | CAFE MAMBO - THE REAL SOUND OF IBIZA | Columbia SONYTV90CD/SONYTV90MC/- (TEN) |
| 20 | 15 | CREAM IBIZA ARRIVALS | Virgin/EMI VTDCCD311/VTDMC311/- (E) |

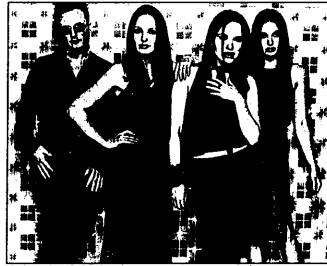
ARTISTS A-Z

| | | | |
|------------------------|---------|--------------------------------|-------|
| ABBA | 37 | MARLEY, Bob, AND THE WAILERS | 52 |
| ADAMS, Bryan | 89 | MELANIE C | 24 |
| ASHCROFT, Richard | 15 | MOBY | 5 |
| Alice Deejay | 8 | MOLOKO | 28 |
| BACKSTREET BOYS | 74 | MORCHEEBA | 7,59 |
| BADLY DRAWN BOY | 46 | MORISSETTE, Alanis | 56 |
| BLINK 182 | 34 | McDONALD, Jana | 49 |
| BOCELLI, Andrea | 27 | ODISSEY | 20 |
| BON JOVI | 18 | PAGE, Jimmy & The Black Crowes | 39 |
| BRAXTON, Toni | 58 | RED HOT CHILI PEPPERS | 28,71 |
| Bb King & Eric Clapton | 31 | REM | 44,53 |
| CHAPMAN, Tracy | 72 | S CLUB 7 | 10,57 |
| COODER, Ry | 75 | SANTANA | 14 |
| CORRS, The | 1,42,51 | SAVAGE GARDEN | 32 |
| CDOLPLAY | 3 | SCOTT, Jill | 73 |
| DESTINY'S CHILD | 23 | SHEPARD, Vonda | 61 |
| DION, Celine | 65 | SMON, Paul | 70 |
| DR DRE | 21 | SINATRA, Frank | 47,58 |
| EMINEM | 2,17 | SSOD | 55 |
| FATBOY SLIM | 63 | SPEARS, Britney | 13,48 |
| FERRY, Bryan | 72 | STEWART, Rod | 64 |
| FIVE | 40 | STING | 19 |
| FLEETWOOD MAC | 54 | TRAVIS | 16 |
| GABRIELLE | 9 | TURNER, Tina | 25 |
| GRAY, David | 4 | Twain, Shania | 30,67 |
| GRAY, Macy | 36 | TOPLADER | 26 |
| HOUSTON, Whitney | 6 | VENGABOYS | 33 |
| IGLESIAS, Julio | 38 | WESTLIFE | 35 |
| JONES, Tom | 11 | WHITE, Barry | 43 |
| KELIS | 60 | ZIMMER, Hans & Lisa Gerrard | 45 |
| LANG, KO | 41 | | |
| LEFTFIELD | 66 | | |
| LIMP BIZKIT | 50 | | |
| MADONNA | 82 | | |



CHART COMMENTARY

by ALAN JONES



ALBUMS FACTFILE

A fortnight after debuting at number one on the singles chart with *Breathless*, The Corrs repeat the feat on the album chart with *In Blue*. The Irish group's third studio album (their most recent release was *Unplugged*, an MTV recording) is the follow-up to *Talk On Corners*, which took seven months to reach number one but which eventually spent five weeks at the apex, topped the 1999 sales rankings and has sold a total of more than 2.75m copies to date. Even *Unplugged*, which

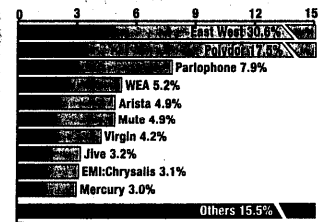
largely comprises stripped down versions of previously released tracks, has sold more than 500,000 copies. Expectations of a big opening week for *In Blue* were fulfilled, with the album selling nearly 154,000 copies, three times as many as Eminem's *The Marshall Mathers LP* sold in retaining runners-up spot. *In Blue* contains a new studio recording of The Corrs' last single *Radio*, which featured on *Unplugged*, as well as *Breathless* and 13 other new tracks.

Big but not huge must be the verdict on The Corrs' *In Blue* album, which sold nearly 154,000 copies last week to command a 10.1% share of the artist album market. Earlier this year, Oasis' *Standing On The Shoulder Of Giants* sold 143,000 copies in just one day, and 311,000 copies in a week. The Corrs' tally is the second highest ever weekly sale for an album by an Irish act, however, trailing only the 329,000 achieved by Boyzone's *By Request* a little over a year ago.

Eminem's *The Marshall Mathers LP* continues to outpace all previous rap albums in the now considerable history of the genre. The album sold more than 51,000 copies last week and was expected to surge past the 500,000 sales mark today (Monday), just 57 days after it was released. It has thus overtaken Oasis' *Standing On The Shoulder Of Giants* (489,000 sales) as the biggest-selling artist album so far released in 2000. It

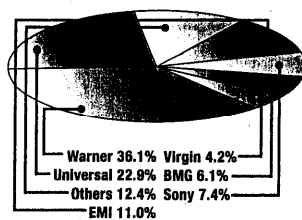
MARKET REPORT

TOP 10 COMPANIES



Figures show top 10 companies by % of total sales, and corporate group shares by % of total sales, of the Top 75 artist albums

TOP CORPORATE GROUPS



SALES UPDATE



PERCENTAGE OF UK ACTS IN THE CHART

UK: 32.0% US: 53.3% Other: 14.7%

stands at number seven in the year-to-date album rankings but the albums ahead of it - Moby's *Play*, Travis's *The Man*

Who, Tom Jones's *Reload*, Gabrielle's *Rise*, Santana's *Supernatural* and Shania Twain's *Come On Over* are all 1999

releases, except the last named, which dates from 1998.

It is worth noting that sales of the aforementioned *Standing On The Shoulder of Giants* by Oasis have increased now for five weeks in a row, and that it moves 22-20 on the current chart, with a 7% improvement on last week. What is astonishing, however, is that its sales over the past 20 weeks together are equal to just 56% of its first week tally.

Aside from The Corrs' *In Blue*, the only new entries this week are rising R&B star Jill Scott's *Who Is Jill Scott?* at 73, and Who Needs Guitars Anyway by Alice Deejay at eight. Although the Dutch act have had three consecutive Top 10 hits, the success of Alice Deejay is a little surprising and brings the Positiva label its fourth Top 10 album, following *Reel 2 Real's Move It!* (number eight, 1994) and the Vengaboys' *The Party Album* (number six, 1999) and *The Platinum Album* (number nine, 2000).

COMPILATIONS

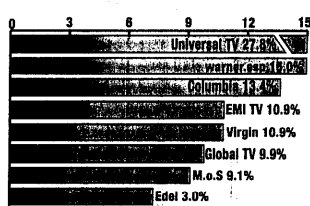
Sales of compilations have varied no more than 2% in the past four weeks and, with no new release capable of breaking into the Top 10, the slumber continues this week, with sales overall off just 1.7%, while *Kiss Clublife Summer 2000* assumes pole position, even though its own sales are down by 1% in the week. The album has sold just short of 60,000 copies in two weeks and replaces *Fresh Hits - Volume 1*, which has held pole position for the past two weeks and which now slips to number two. Any query about whether either of the two titles will be number one next week and whether sales will continue at a low level can be dismissed with a confident "no" - *Now That's What I Call Music! 46* was unleashed today (Monday) with the usual consequences. Its counterpart 1999 release

- *Now! 43* - sold nearly 175,000 copies on its first week in the shops. Incidentally, to soothe the slightly aggrieved but good folk at Virgin/EMI, I should point out that last week's reference to *Now! 45's* "significant" slippage compared to 1999's equivalent *Now! 42* refers only to the fact that it sold 34,000 fewer in the same time frame. That's certainly a significant number of sales for most albums but perhaps not for albums in the *Now* series. To put it in context, for every 20 people who bought *Now! 42*, 19 purchased *Now! 45*.

The latter album, sold more than 7,000 copies last week to remain at number 10 on its 14th straight week in the Top 10. The chart's highest new entry is Sony's seasonally appropriate *Summer Breeze*, at number 14 with 5,500 sales.

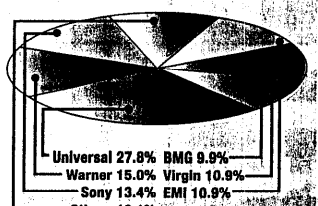
MARKET REPORT

TOP 10 COMPANIES



Figures show top 10 companies by % of total sales of the Top 20, and corporate group shares by % of total sales of the Top 20.

TOP CORPORATE GROUPS



SALES UPDATE



COMPILATIONS' SHARE OF TOTAL SALES

Artist albums: 75.5%
Compilations: 24.5%

INDEPENDENT ALBUMS

| This | Last | Title | Artist | Label (distributor) |
|------|------|------------------------------------|-------------------------------|----------------------------------|
| 1 | 1 | PLAY | Moby | Mute CDSTUMM 172 (V) |
| 2 | 2 | RELOAD | Tom Jones | Gut GUTCD 009 (V) |
| 3 | 4 | OOPS! I DID IT AGAIN | Britney Spears | Jive 9220392 (P) |
| 4 | 3 | STANDING ON THE SHOULDER OF GIANTS | Oasis | Big Brother RKID CD002 (3MV/P) |
| 5 | 5 | THINGS TO MAKE AND DO | Moloko | Echo ECHCD 31 (P) |
| 6 | 6 | THE HOUR OF BEWILDERBEAST | Badly Drawn Boy | XL Recordings TNXLCD 133 (V) |
| 7 | 7 | LIVE AT THE GREEK | Jimmy Page & The Black Crowes | SPV Recordings SPV 09172022 (KO) |
| 8 | NEW | DON'T LAUGH | Winx | Club Tools 0067665CLU (V) |
| 9 | 8 | SCREAMADELICA | Primal Scream | Creation CRECD 076 (3MV/P) |
| 10 | 12 | STEPTACULAR | Steps | Ebu/Jive 0519442 (P) |
| 11 | 11 | BABY ONE MORE TIME | Britney Spears | Jive 0522172 (P) |
| 12 | 17 | BUENA VISTA SOCIAL CLUB | Ry Cooder | World Circuit WCD 050 (P) |
| 13 | 16 | SHOWBIZ | Muse | Mushroom MUSH 59CD (3MV/P) |
| 14 | 15 | REMEDY | Basement Jaxx | XL Recordings XLCD 129 (V) |
| 15 | NEW | TRUE LOVE - A COLLECTION | Al Green | Music Collection MCCD378 (I) |
| 16 | 13 | YOU'VE COME A LONG WAY, BABY | Fatboy Slim | Skint BRASSIC 11CD (3MV/P) |
| 17 | 10 | GARBAGE | Garbage | Mushroom D 31450 (3MV/P) |
| 18 | NEW | NO STRINGS ATTACHED | NSYNC | Jive 9220272 (P) |
| 19 | NEW | GENERALISATION | Midfield General | Skint BRASSIC18CD (3MV/P) |
| 20 | NEW | THEY THINK IT'S ALL OVER IT IS NOW | Thunder | Papillon BTFLYCD0004 (P) |

THE YEAR SO FAR... TOP 20 SINGLES

| TW | LW | Title | Artist | Label |
|----|-----|-------------------------|--------------------------------|---------------|
| 1 | 1 | PURE SHORES | ALL SAINTS | LONDON |
| 2 | 3 | IT FEELS SO GOOD | SONIQUE | UNIVERSAL |
| 3 | 2 | TUCA'S MIRACLE | FRAGMA | POSITIVA |
| 4 | 4 | FILL ME IN | CRAIG DAVID | WILDSTAR |
| 5 | 5 | RISE | GABRIELLE | GO BEAT |
| 6 | 7 | OOPS I DID IT AGAIN | BRITNEY SPEARS | JIVE |
| 7 | 10 | REACH | S CLUB 7 | POLYDOR |
| 8 | 6 | NEVER BE THE SAME AGAIN | MELANIE C/LISA LEFT EYE LOPES | VIRGIN |
| 9 | 9 | THE BAD TOUCH | BLOODHOUND GANG | GEFFEN |
| 10 | 8 | AMERICAN PIE | MADONNA | MAVERICK |
| 11 | 12 | THONG SONG | SISQO | DEF SOUL |
| 12 | 11 | MOVIN TOO FAST | ARTFUL DODGER & ROMINA JOHNSON | LOCKED ON |
| 13 | 13 | BORN TO MAKE YOU HAPPY | BRITNEY SPEARS | JIVE |
| 14 | 15 | DON'T CALL ME BABY | MADISON AVENUE | VC RECORDINGS |
| 15 | NEW | GO LET IT OUT | OASIS | BIG BROTHER |
| 16 | 16 | FLOWERS | SWEET FEMALE ATTITUDE | WEA |
| 17 | 17 | DON'T GIVE UP | CHICANE FEAT. BRYAN ADAMS | XTRAVAGANZA |
| 18 | 18 | BAG IT UP | GERI HALLIWELL | EMI |
| 19 | NEW | SANDSTORM | DARU | NEO |
| 20 | NEW | THE REAL SLIM SHADY | EMINEM | INTERSCOPE |

© CIN Last week's position represents chart from three weeks ago