

TOP 75 SINGLES

THE OFFICIAL Musicweek CHART

This Week	Last Week	Title	Artist (Producer) Publisher	Label CD/Cass (Distributor)	7/12	This Week	Last Week	Title	Artist (Producer) Publisher	Label CD/Cass (Distributor)	7/12	TITLES AZ (WRITERS)	
												Entry	Clamber
1	2	OH CAROLINA	Shaggy (Sting Int.) Greensleeves	Greensleeves GRECD 361/GREC 361 (US/BMG) GRE(D) 361		37	49	REACH OUT I'LL BE THERE	Michael Bolton (Afanasiy/Bolton) Jobete/EMI	Columbia 658897/2/658897A (SM) 658897/1-		All About Eve (Marxman).....24	
2	1	NO LIMIT	2 Unlimited (Wild/De Coster) MCA	PWL Continental PWCD 256/PWMC 256 (W) PWL(T) 256		39	22	I FEEL YOU	Depeche Mode (Depeche Mode/Flood) EMI	Mute CDBONG 21/CBONG 21 (RTM/P) BONG 21/-		Alone (Anderson).....49	
3	12	MR. LOVERMAN	Shabba Ranks (Dylan/Bennett) Dub Plates/Greensleeves	Epic 6590782/6590784 (SM) -6590786		40	NEW	ONE MORE CHANCE	Maxi Priest (Law/Hamblin) EMI	Ten TENC 420/TENC 420 (F) TEN(X) 420		And So I Wait For You (Clem/Morgan).....66	
4	9	STICK IT OUT	Right Said Fred and Friends (Goodfellow) Hit & Run	Tug CDCOMIC 1/CACOMIC 1 (12)COMIC 1		41	27	RUBY TUESDAY	Rod Stewart (Horn) Westminster	Warner Bros W0158CD/W0158C (W) W0158/-		Animal Nitrate (Anderson/Butler).....14	
5	3	GIVE IN TO ME	Michael Jackson (Jackson/Bottrell) WC	Epic 6590692/6590694 (SM) 6590697/-		42	NEW	THE WOMAN I LOVE	The Hollies (Moran/Taverner) WC	EMICDEM 264/TCEM 264 (E) EM 264/-		Anything (Youngblood/Hamm/Staab/Zunden).....48	
6	4	ARE YOU GONNA GO MY WAY	Lenny Kravitz (Kravitz) Miss Bessie/EMI	Virgin VUSDG 65/VUS 65 (F) VUS 65/-		43	33	ORDINARY WORLD	Duran Duran (Duran Duran/Jones) CC	Parlophone CDDDS 16/TCDD 16 (E) DD 16/-		Are You Gonna Go My Way (Kravitz/Ross).....6	
7	5	LITTLE BIRD/LOVE SONG FOR A...	Annie Lennox (Lipson) La Lennox/BMG	RCA 74321133832/74321128834 (BMG) 74321128837/74321128831 (W)		44	30	TOOK MY LOVE	Bizarre Inc/A Brown (Scott/Bizarre Inc) Schnozza	Vinyl Solution STORM 60CD/STORM 60 (RTM/P) STORM 60S/STORM 60		Bad Girl (Ciccione/Pettibone).....20	
8	24	INFORMER	Snow (MC Shan/Ficarrotta/Leary) PolyGram/CC	East West America A 8436CD/A 8436C (W) A 8436(T)		45	34	FOR WHAT IT'S WORTH	Oui 3 (Oui 3) WC	MCA MCST 1736/MCSC 1736 (BMG) MCS(T) 1736		Born 2 B.R.E.E.D. (Love/Prince/Seaco).....18	
9	NEW	SHORTSHARPSHOCK (EP)	Therapy? (Sheldon/Therapy?) MCA	A&M AMCD 208/AMMC 208 (F) AM(Y) 208		46	NEW	TIME TO GET UP	Liquid (Ame/Wright) Momentum	XL Recordings XLS 40CD/- (W) -XLT 40		Botta, The (Heron).....18	
10	15	TOO YOUNG TO DIE	Jamiroquai (Jamiroquai) EMI/CC	Sony S2 6590112/- (SM)		47	40	HOW CAN I LOVE YOU MORE? (REMIXES)	M-People (M-People) BMG/EMI	Decon/RCA 7432130232 (BMG) 7432130234/7432130237/7432130231		C'mon People (McCartney).....72	
11	17	LOOKING THROUGH PATIENT EYES	PM Dawn (PM Dawn) MCA/Morrison Leary	Geesec 47/GEEC 47/GEI (T) 47		48	NEW	ANYTHING	Sydney Youngblood (P'N'T Tribe Of Soulsters) CC	RCA 7432138672/7432138674/7432138677 (BMG) 7432138671		Cats In The Hat (Chapin/Chapin).....13	
12	6	I'M EVERY WOMAN	Whitney Houston (Walden) Island	Arista 74321131502/74321131504 (BMG) 74321131507/74321131501 (S)		49	35	ALL ABOUT EVE	Marxman (Fuests/Marxman) Island/Jobete/EMI	Talkin Loud TLKCD 35/TLKMC 35 (F) TLK(X) 35		Constant Craving (Lang/Mink).....15	
13	21	CATS IN THE CRADLE	Ugly Kid Joe (Dodson) WC	Mercury MERC 385/MERMC 385 (F) MER(X) 385		50	39	GIVE IT TO YOU	Martha Wash (Morgan) Bam Jams	RCA 7432136562/7432136564 (BMG) 7432136567/7432136561		Cystal Clear (Norma/Bal).....27	
14	7	ANIMAL NITRATE	Suede (Buller) PolyGram	Nude NUD 4CD/NUD 4C (RTM/P) NUD 4S/NUD 4T		51	NEW	FREEDOM GOT AN A.K.	Da Lench Mob (Ice Cube/Various) WC	East West America A 8431CD/A 8431C (W) A 8431(T)		Deep (Martinez).....17	
15	19	CONSTANT CRAVING	KD Lang (Penny/Mink/Lang) PolyGram/Zomba	Sire W0157CD/W0157C (W) W0157/-		52	38	IN THE STILL OF THE NITE (I'LL REMEMBER)	Boyz II Men (Boyz II Men) Anglo Pic	Motown TMGCD 1415/TMGCS TMG(X) 1415		Don't Walk Away (Benford/Spearman).....36	
16	14	LOST IN MUSIC (SURE IS PURE REMIXES)	Sister Sledge (Edwards/Rodgers) WC	Atlantic (W) A 4509(T)		53	37	KILLING IN THE NAME	Rage Against The Machine (Rage Against The Machine/Ggarth) Sony	Epic 6584922/-6584926 (SM) 658		Extremes (Benites/Garrett/Harris).....64	
17	11	DEEP	East 17 (Goodfellow) PolyGram	London LOCDP 334/LONCS 334 (F) LON 334/-		54	NEW	LOVE'S TAKEN OVER	Chante Moore (Law/Patches) EMI	MCA MCST 1744/MCSC 1744 (BMG) -MCST 1744		Fear Of The Dark (Live/Harris).....19	
18	25	BORN 2 B.R.E.E.D.	Monie Love (Prince) Chrysalis/WC	Cooltempo CDCOOL 269/TCOOL 269 (F) 12)COOL 269		55	42	SHE HITS ME	The 4 Of Us (Glossop) Rondor	Columbia 6589192/6589194 (SM) 6589197/-		Freedom Got An A.K. (Ice Cube/T-Bone/Cassey).....51	
19	8	FEAR OF THE DARK (LIVE)	Iron Maiden (Harris) Zomba	EMICDEMS 263/- (E) EMPD 263/-		56	41	THE SIDEWINDER SLEEPS TONITE	REM (Lit/WREM) WC	Warner Bros W 0152CD/W 0152C (W) W 0152/-		Give In To Me (Jackson/Bottrell).....5	
20	10	BAD GIRL	Madonna (Madonna/Pettibone) MCA/WC	Maverick/Sire W0154CD/W0154C (W) W0154(TW)		57	47	OPEN YOUR MIND	Usura (Creminoni) WC/EMI	Deconstruction/RCA 74321128042 (BMG) 74321128047/74321128041		Give It To You (Morgan).....50	
21	16	THE LOVE I LOST	West End featuring Sybil (Stock/Waterman) WC	PWL Sanctuary PWCD 253/PWMC 253 (W) PWL(T) 253 (S)		58	46	SWEET HARMONY	The Beloved (Marsh/Marsh) EMI	East West YZ 709CD/YZ 709C (W) YZ 709(T) (S)		Ground Level (Hallam/Birch).....65	
22	NEW	WHEN I'M GOOD AND READY	Sybil (Stock/Waterman) All Boys	PWL International PWCD 260/PWMC 260 (W) PWL(T) 260		59	NEW	SLID	Fluke (Fluke) EMI	Circa YRCD 103/- (F) -YRT 103		Heart (Don't Change My Mind) (Warren/Buonar).....35	
23	18	I PUT A SPELL ON YOU	Bryan Ferry (Ferry/Trower) EMI	Virgin VSCDG 1400/VSC 1400 (F) VS 1400/-		60	54	SO DEEP	The Rease Project (Saunderson) Drive-On/EMI/CC	Network NWKCD 68/NWKM 68 (P) NWK(T) 68		How Can I Love You More? (Remixes) (Pickering/Herd).....47	
24	29	ALONE	Big Country (Big Country) EMI	Compulsion CDPULSS 47/CPLS 4 (E) -J2)PULSP 4		61	NEW	TAKE ME UP	Sonic Surfers/Jocelyn Brown (Broekhuysa/Trane) MCA	A&M AMCD 210/AMMC 210 (F) AM(Y) 210		I Feel You (Gore).....39	
25	28	LABOUR OF LOVE (REMIXES)	Hue And Cry (Goldsberg/Biondillo) WC	Circa HUESD 1/HUESC 1 (F) HUES(T) 1		62	52	THE MORNING PAPERS	Prince & New Power Generation (Prince) WC	Paisley Park W 0162CD/W 0162C (W) W 0162/-		I Put A Spell On You (Hawkins).....23	
26	NEW	THEM BONES	Alice In Chains (Jerden/Alice In Chains) Sony	Columbia 6590902/- (SM) 6590907/6590906		63	NEW	SHOT IN THE DARK	DJ Hypa (DJ Hypa/Coolhand Flex) Suburban Base	Suburban Base SUBBASE 20CD/- (SRD) SUBBASE 20		I'm Every Woman (Ashford/Simpson).....12	
27	32	CRYSTAL CLEAR	The Grid (The Grid) EMI	Virgin VSCDT 1442/VSC 1442 (F) VSI(T) 1442		64	50	EXTERMINATE!	Snap featuring Niki Haris (Snap) WC	Logic/Arista 74321106962/74321106964 (BMG) 74321106967/74321106961 (S)		It Started With A Kiss (Brown).....31	
28	23	I WILL ALWAYS LOVE YOU	Whitney Houston (Foster) Carlin	Arista 74321120652/74321120654 (BMG) 74321120657/74321120651 (S)		65	56	GROUND LEVEL	Stereo MCs (Stereo MCs) EMI	4th + B'way BRCD 268/BRCA 268 (F) (12)BRW 268		It Started With A Kiss (Brown).....31	
29	13	WHY CAN'T I WAKE UP WITH YOU?	Take That (Jervier/Jervier) EMI	RCA 74321133102 (BMG) 74321133104/74321133107/- (S)		66	57	AND SO I WILL WAIT FOR YOU	Dee Fredrix (Philips/Moonshine) Sony/BMG	East West YZ 725CD/YZ 725C (W) YZ 725/-		Killing In The Name (De La Rocha/Rage Against The Machine).....53	
30	20	IN YOUR CARE	Tasmin Archer (Mendelsohn/Kaye) EMI	EMICDEMS 260/TCEM 260 (E) EMI 260/-		67	55	IF I EVER LOSE MY FAITH IN YOU	Sting (Padgham/Sting) Magnetec	A&M AMCD 0172/AMMC 0172 (F) AM 0172/- (S)		Looking Through Patient Eyes (Corder/Michael).....11	
31	36	IT STARTED WITH A KISS	Hot Chocolate (Most) Chocolate/RAK	EMICDEMC 77/TCEMC 7 (E) EMCT 7/-		68	62	REMINISCE	Mary J Blige (Hall/Combs) MCA	MCA MCST 1731/MCSC 1731 (BMG) -MCST 1731		Lost In Music (Sure Is Pure Remixes) (Rodgers/Edwards).....16	
32	NEW	LOVE THING	Evolution (Evolution) CC	Deconstruction/RCA 74321134272/74321134274 (BMG) 74321134277/74321134271		69	61	INSPECTOR MORSE THEME	Barrington Pheloung (Walker) Rainbow/EMI	Virgin VSCDT 1458/VSC 1458 (F) VS 1458/-		Love Lost, The (Gamble/Huff).....21	
33	44	SHOW ME LOVE	Robin S (George/McFarlane/Stonebridge) Champion	Champion CHAMP 300/CHAMPK 300 (BMG) CHAMP 112)300		70	43	WONDERFUL	Runrig (Harley) Chrysalis	Chrysalis CDCHS 3952/TCCHS 3952 (E) CHSS 3952/-		Love Thing (Sutton/Jamieson).....32	
34	NEW	MORE, MORE, MORE	Bananarama (Stock/Waterman) EMI	London NACPD 27/NANCS 27 (F) NANA 27/-		71	58	SUNDAY MONDAYS	Vanessa Paradis (Kravitz) Miss Bessie/EMI	Remark PZCD 251/POCS 251 (F) PO 251/-		Love's Taken Over (Remixes) (Kane/Kane).....52	
35	31	HEART (DON'T CHANGE MY MIND)	Diana Ross (Asher) EMI/ATV	EMICDEM 261/TCEM 261 (E) EMI 261/-		72	48	C'MON PEOPLE	Paul McCartney (McCartney/Mendelsohn) MPL	Parlophone CDPS 6338/TCR 6338 (E) R 6338/- (S)		Love's Taken Over (Remixes) (Kane/Kane).....52	
36	NEW	DON'T WALK AWAY	Jade (Benford) MCA/EMI	Giant W0160CD/- (W) W0160(T)		73	60	N.Y.C. (CAN YOU BELIEVE THIS CITY?)	Charles & Eddie (Deutsch) PolyGram/EMI/WC	Capitol CDCCL 681 (E) (12)CL 681		More, More, More (Clemson/Stock/Waterman/Dalton/Woodward).....34	
37	26	THIS TIME	Dina Carroll (Lewis) CC/MCA	A&M AMCD 0184/AMMC 0184 (F) AM(Y) 0184		74	53	STAIRWAY TO HEAVEN	Rolf Harris (Harriet) WC	Vertigo VERCD 73/VERMC 73 (F) VER 73/- (S)		More, More, More (Clemson/Stock/Waterman/Dalton/Woodward).....34	
						75	51	THE BOTTLE	The Christians (The Christians/Stent) White Metal	Island CID 549/CIS 549 (F) (12)IS 549		Moving Papers, The (Prince).....62	

TITLES AZ (WRITERS)

All About Eve (Marxman).....24
Alone (Anderson).....49
And So I Wait For You (Clem/Morgan).....66
Animal Nitrate (Anderson/Butler).....14
Anything (Youngblood/Hamm/Staab/Zunden).....48
Are You Gonna Go My Way (Kravitz/Ross).....6
Bad Girl (Ciccione/Pettibone).....20
Born 2 B.R.E.E.D. (Love/Prince/Seaco).....18
Botta, The (Heron).....18
C'mon People (McCartney).....72
Cats In The Hat (Chapin/Chapin).....13
Constant Craving (Lang/Mink).....15
Cystal Clear (Norma/Bal).....27
Deep (Martinez).....17
Don't Walk Away (Benford/Spearman).....36
Extremes (Benites/Garrett/Harris).....64
Fear Of The Dark (Live/Harris).....19
For What It's Worth (Silla).....19
Freedom Got An A.K. (Ice Cube/T-Bone/Cassey).....51
Give In To Me (Jackson/Bottrell).....5
Give It To You (Morgan).....50
Ground Level (Hallam/Birch).....65
Heart (Don't Change My Mind) (Warren/Buonar).....35
How Can I Love You More? (Remixes) (Pickering/Herd).....47
I Feel You (Gore).....39
I Put A Spell On You (Hawkins).....23
I'm Every Woman (Ashford/Simpson).....12
If Ever Lose My Faith In You (Sting).....67
In The Still Of The Nite (I'll Remember) (Prince).....52
In Your Care (Archer/Beck/Hughes).....52
Informor (O'Brien/Molke/Laure).....8
Inspector Morse Theme (Pheloung).....69
It Started With A Kiss (Brown).....31
Killing In The Name (De La Rocha/Rage Against The Machine).....53
Labour Of Love (Remixes) (Kane/Kane).....52
Love's Taken Over Song For A Vampire (Lennox).....7
Looking Through Patient Eyes (Corder/Michael).....11
Lost In Music (Sure Is Pure Remixes) (Rodgers/Edwards).....16
Love Lost, The (Gamble/Huff).....21
Love Thing (Sutton/Jamieson).....32
Love's Taken Over (Moore/Law).....54
More, More, More (Clemson/Stock/Waterman/Dalton/Woodward).....34
Morning Papers, The (Prince).....62
Moving Papers, The (Prince).....62
M. Loverman (Gordon/Bennett/Lindo).....3
N.Y.C. (Can You Believe This City?) (Chacon/Freed).....73
No Limit (Dells/Silngard/Wilde/De Coster).....2
Oh Carolina (Fikes).....41
One More Chance (Elliot/Law/Davay/Hamblin).....40
Open Your Mind (Cremonini/Comis/Yarola/Sprechlich/Celvello).....57
Ordinary World (Duran Duran).....43
Reach Out I'll Be There (Holland/Dozier/Holland).....37
Reminiscence (Greene/Hall).....68
Ruby Tuesday (Jagger/Richards).....41
She Hits Me (The Four Of Us).....55
Shortsharps (EP) (Therapy?).....9
Shot In The Dark (DJ Hypa).....63
Show Me Love (George/McFarlane).....33
Sidewinder Sleeps Tonite, The (Mills/Buck/Berry/Elpe).....56
So Deep (Saunderson/Jamerson/Grey/Saunderson).....60
Stairway To Heaven (Page/Plant).....74
Stick It Out (Fairbairn/Fairbairn/Manzoni).....4
Sunday Mondays (Kravitz/Hirsch).....71
Sweet Harmony (Marsh/Marsh).....58
Take Me Up (Brown/Edwards/Cornelie/Brookhays).....61
Them Bones (Cathel).....28
This Time (Carroll/Lewis).....37
This Time To Get Up (Ame).....46
Too Young To Die (JK/Smith).....10
Took My Love (Meechan/Meredith/Turner/Scott/Brown).....44
When I'm Good And Ready (Stock/Waterman).....22
Why Can't I Wake Up With You? (Baird).....29
Woman I Love, The (Kershaw).....42
Wonderful (MacDonald/MacDonald).....70

PLATINUM (900,000) GOLD (500,000) SILVER (250,000)
 * Panel sales increase over last week
 * Panel sales increase of 50% or more over last week
 © CD Compiled by Gallup for Music Week, BBC and BARD. Produced in conjunction with the BPI and BARD, based on a minimum sample of 500 record outlets. Incorporating 7", 12", Cassettes and CD singles sales. All rights reserved.

As used by Top Of The Pops and Radio One

STONE ISLAND

PILOTS

SEX TYPE THING

The new single available on 12" and CD. As performed live on The World, 13th March 1993.

DISTRIBUTED BY WARNER MUSIC UK. A TIME WARNER CO. ORDER FROM YOUR WARNER MUSIC UK SALESPERSON OR CALL TELESales ON 081 998 5029

VAN HALEN

JUMP

10 Maiden Over
Live offering leads
new releases

12 Mode load
Album and single
success for Depeche

18 Bluemoon
Buddy Guy scores
indie Top 10 entry

20 Young Gun
Jamiroquai storm
the dance charts

music week

datafile

The Information Source for the Music Industry

20 MARCH 1993

CHART FOCUS

The charts change so quickly nowadays that the good old fashioned way of debuting low and climbing through the ranks for several weeks before peaking is almost extinct. Almost, but not quite. For the **Shaggy** single *Oh Carolina* — which replaces **2 Unlimited's** *No Limit* at number one this week — is a sleeper of the first order. It was written 35 years ago, and Shaggy's version was out for eight weeks before it finally entered the Top 75 at 62 on February 6. It has since moved from 37-18-13-5-2-1.

The dancehall explosion that has brought not just **Shaggy**, but also **Shabba Ranks** and **Snow** into the Top 10 this week marks a new high tide mark for reggae, more than a quarter of a century after it first gained a foothold on the UK chart. Its previous best showing was as long ago as July 1971, when there were two reggae singles inside the Top 10 and a third just outside — **Greyhound's** *Black & White* was number six, a place ahead of **Dave & Ansel**



Collins' Double Barrel, while **Bob & Marcia** occupied 13th place with *The Pied Piper*.

In a week when, for once, new Top 40 entries are thin on the ground, the week's biggest breakthrough comes from **Belfast band Therapy?**, whose *Shortsharpshock* EP debuts at number nine. Their previous best chart placing was the number 38 posting attained by their last single, *Nurse*. While not making such a big splash as *Therapy?*, **Bananarama** are back in the Top 40 with *More More More* debuting at number 34.

It's two years next week since teen sensation **Chesney**

Hawkes topped the chart with *The One And Only*, on which **Nik Kershaw** had writing credits. Kershaw's latest songwriting success is *The Woman I Love*, which debuts at number 42 for the **Hollies**. *The Woman I Love* is their first hit with a new song since *Soldier's Song* in 1980.

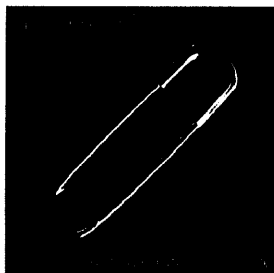
On the album chart, **Lenny Kravitz** retains the number one slot, but **Pink Floyd's** *Dark Side Of The Moon* celebrates its 20th birthday by re-entering the chart at number four, fading towards the weekend when it looked set to equal the number two peak it scaled when first released in 1973.

Its high profile return to the chart now is in contrast to its last chart appearance, in January 1991, when it dropped anchor for a solitary week at number 75. Even though its Top 75 excursions are few and far between, it has been an incredibly consistent seller over the years, and has appeared in the Top 200 388 times since the beginning of 1983.

Alan Jones

CHART NEWCOMERS

9 THERAPY?: Shortsharpshock EP (A&M) UK 2nd hit.
Producer: Chris Sheldon/Therapy?
Publisher: MCA.
Writer: Therapy?
Line-up: Andy Cairns (V/G), Michael McKeegan (B), Fyfe Ewing (D).
Notes: From Belfast, released a single on their own Multifuckingnational label in 1990 before signing to Wiiiija where they released two mini albums, *Babyteeth* and *Pleasure Death*. They signed to A&M last year and released their debut album proper, *Nurse*, in November.



keyboardist **Eamon Downes** from **London and Time To Get Up** is his first venture since splitting from former member **Shane Heneghan**. He used to work in a specialist record store and he had a brief flirtation with DJing.
Album: tba (Sept).

2 BREAKER LIQUID: Time To Get Up (XL Recordings) UK 3rd hit.
Producer: Ame/Jezz Wright.
Publisher: Momentum.
Writer: Ame.
First and biggest hit: *Sweet Harmony* (15, 1992).
Last hit: *The Future Music EP* (59, 1992).
Notes: *Liquid* is 25-year-old

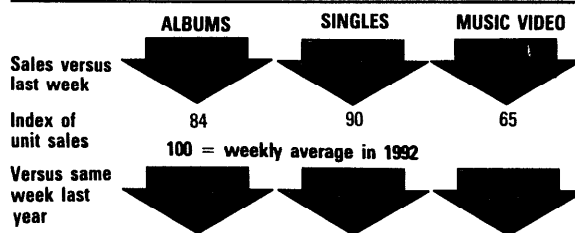
32 EVOLUTION: Love Thing (deConstruction) UK debut.
Producer: Evolution.
Publisher: Copyright Control.
Writer: Sutton/Jamieson.
Line-up: Jonathon Sutton (K),

Barry Jamieson (K).
Notes: Formed in Warrington in 1990 they released *Out Of Nowhere* on their own *Positive Vinyl* label, notched up considerable demand internationally, scored a number one in *US Rave* magazine's import chart and gave DJ **Sasha** his debut as a remixer. The band are currently recording their second single.
Album: tba.

59 FLUKE: Slid (Circa) UK debut.
Producer: Fluke.
Publisher: EMI.
Writer: Fluke.
Line-up: Jon Fugler (K), Mike Bryant (K), Mike Tournier (K), Julian Nugent (K).
Notes: Based in London the band have released four singles: *Thumper*, *Joni* (both white labels), *Philly* (Creation) and *The Bells* (Circa). They have recorded two mini albums *The Techno Rose Of Blighty* (Creation) and *Out* (Circa).
Album: tba (Sept).

UPDATE

SALES



Source: Gallup © CIN

LATEST SALES AWARDS

- Platinum**
Pink Floyd: *Dark Side Of The Moon*
Annie Lennox: *Diva* (X3)
UB40: *Best Of Vol 1* (X4)
Rod Stewart: *Best Of* (X4)
- Gold**
REM: *Green*
Sting: *10 Summoner's Tales*
- Silver**
Midge Ure & Ultravox: *If I Was ...*
Duran Duran: *The Wedding Album*
Various: *Lipstick On Your Collar*

NEXT WEEK'S HITS

- | | |
|--|---|
| SINGLES
MARC ALMOND: <i>What Makes A Man</i> (WEA)
APACHE INDIAN: <i>Chok There</i> (Island)
THE BLUEBELLS: <i>Young At Heart</i> (London)
DAVID BOWIE: <i>Jump They Say</i> (Arista)
GARY CLARK: <i>Freefloating</i> (Virgin)
PETER GABRIEL: <i>Blood Of Eden</i> (Virgin)
GO WEST: <i>Still In Love</i> (Chrysalis) | CLIFF RICHARD: <i>Peace In Our Time</i> (EMI)
SUNSCREAM: <i>Pressure</i> (Remix) (Soho Square)
VAN HALEN: <i>Jump Live</i> (Warner Bros) (London)
ALBUMS
DAVID COVERDALE & JIMMY PAGE: <i>Coverdale Page</i> (EMI)
LIPSTICK ON YOUR COLLAR: <i>Various</i> (PolyGram TV/Channel 4) |
|--|---|
- Predictions compiled by Era. Last week's score: 12 out of 13.

FORTHCOMING SUPPLEMENTS IN

music week

APRIL 10th
BLUES

Can white men sell the Blues?
Industry experts examine why Blues is more popular than ever before.

APRIL 17th
MID-PRICE-LOW PRICE

Who are the major players in this burgeoning market?

For further information contact the
ad department on
071-921 5939

TOP 75 ARTIST ALBUMS

THE OFFICIAL Musicweek CHART

This Week	Last Week	Title	Artist (Producer)	Label/CD (Distributor)	Cass/Vinyl
1	1	ARE YOU GONNA GO MY WAY.	Lenny Kravitz (Kravitz)	Virgin CDVUS 60 (F)	VUSMC 60/WVSLP 60
2	3	UNPLUGGED *	Eric Clapton (Titelman)	Duck 9362450242 (W)	WX 480C/WX 480
3	9	INGENUOUS	KD Lang (Penny/Mink/Lang)	Sire 7599268402 (W)	WX 465C/WX 465
4	RE	THE DARK SIDE OF THE MOON	Pink Floyd (Pink Floyd)	Harvest CDDSON 20 (E)	TCSHVL 804/SHVL 804
5	2	TEN SUMMONER'S TALES	Sting (Padgham/Sting)	A&M 5400752 (F)	5400754/5400751
6	6	DIVA * 3	Annie Lennox (Lipson)	RCA PD 75326 (BMG)	PK 75326/PL 75326
7	NEW	SONGS FROM THE RAIN	Hothouse Flowers (Levine)	London 8283502 (F)	8283504/8283501
8	5	AUTOMATIC FOR THE PEOPLE * 2	REM (Litt/REM)	Warner Bros 9362450552/WX 488C/WX 488 (W)	
9	NEW	FRANK BLACK	Frank Black (Feldman/Black)	4AD CAD 3004CD (RTM/P)	CADC 3004/CAD 3004
10	7	DANGEROUS * 5	Michael Jackson (Riley/Jackson/Sweden/Bottrell)	Epic 4658022 (SM)	4658024/4658021
11	8	ROD STEWART, LEAD VOCALIST	Rod Stewart (Various)	Warner Bros (W)	9362452582/WX 503C/WX 503
12	4	WHATEVER YOU SAY, SAY NOTHING	Deacon Blue (Oskenfold/Osborne)	Columbia (SM)	4735272/4735271
13	11	SO CLOSE	Dina Carroll (Lewis/Mackintosh/Cole/Civilles)	A&M 5400342 (F)	5400344/5400341
14	17	STARS * 10	Simply Red (Levine/Hucknall)	East West 9031752842 (W)	WX 427C/WX 427
15	15	FUNKY DIVAS	En Vogue (McEvoy)	East West America 7567921212 (W)	756792124/756792121
16	10	TAKE THAT AND PARTY *	Take That (Various)	RCA 74321109232 (BMG)	74321109234/74321109231
17	20	RAGE AGAINST THE MACHINE	Rage Against The Machine (Brooks)	Epic 4722242 (SM)	4722244/4722241
18	NEW	OTHER VOICES/OTHER ROOMS	Nanci Griffith (McRooney)	MCA MCD 10796 (BMG)	MCC 10796/-
19	18	CONNECTED	The Stereo MCs (The Stereo MCs)	4th + B-way BRCD 589 (F)	BRCA 589/BRPL 589
20	NEW	THEIR GREATEST HITS	Hot Chocolate (Most)	EMI CDEM TV 73 (E)	TCEMTV 73/EMTV 73
21	19	3 YEARS, 5 MONTHS AND 2 DAYS IN THE LIFE *	Arrested Development (Speech)	Cooltempo CCD 1929/ZCTLP 28 (E)	
21	NEW	THE ULTIMATE GLENN MILLER	Glenn Miller (no credit)	Bluebird 74321131372 (BMG)	74321131374/-
23	14	WORDS OF LOVE	Buddy Holly & The Crickets (Petty)	PolyGram TV/MCA 5144872 (F)	5144874/5144871
24	16	WALTHAMSTOW	East 17 (Various)	London 8283732/8283734 (F)	8283734/8283731
25	13	GREAT EXPECTATIONS	Tasmin Archer (Mendelsohn/Kaye/Wickens/Hughes/Fitzmaurice)	EMI CDEM C 3624/TCMC 3624/EMC 3624 (E)	
26	12	IF I WAS: THE VERY BEST OF	Chrysalis CDCHR 1987/TCCHR 1987 (E)	Midge Ure/Ultavox/Band Aid/Visage/Phil Lynott (Ure/Various)	CHR 1987
27	22	DURAN DURAN (THE WEDDING ALBUM)	Duran Duran (Duran Duran/Jones)	Parlophone (E)	CDD8 34/TCDD8 34/DBD 34
28	21	SO TOUGH	Saint Etienne (Saint Etienne)	Heavenly HVNLP 6CD (P)	HVNLP 6MCHVNLP 6
29	31	OUT OF TIME * 3	REM (Litt/REM)	Warner Bros 7599268496 (W)	WX 404C/WX 404
30	NEW	777	System 7 (Hillage/Graudy/Various)	WAU/Big Life BFLCD 1 (F)	BFLMC 1/BFLPL 1
31	NEW	HIGHER AND HIGHER - BEST OF HEAVEN 17	The Cult (Brown/Rubin/Rock/Various)	Virgin CDV 2171/TCV 2171N/2171 (F)	
32	24	GORECKI: SYMPHONY NO 3	David Zinman/L.S. Upshaw (Matthews)	Elektra Nonesuch 7559792822 (W)	7559792824/-
33	23	PURE CULT	The Cult (Brown/Rubin/Rock/Various)	Beggars Banquet BEGA 130CD (W)	BECA 130/BECA 130
34	29	BOSS DRUM *	The Shamen (The Shamen)	One Little Indian TPLP 42CD (P)	TPLP 42C/TPLP 42
35	27	ROUND MIDNIGHT	Elkie Brooks (Brooks)	Castle Communications CTVCDD 113 (BMG)	CTVMC 113/-
36	36	FEELS LIKE RAIN	Buddy Guy (Porter)	Silvertone ORECDD 525 (P)	OREC 525/OREP 525
37	35	CHER'S GREATEST HITS: 1965-1992 * 3	Cher (Various)	Geffen GED 24439/GEC 24439/GEF 24439 (BMG)	
38	RE	SLIPPERY WHEN WET * 2	Bon Jovi (Fairbairn)	Vertigo 8302642 (F)	VERHC 38/VERH 38
39	29	GOLD - GREATEST HITS * 2	Abba (Andersson/Ulvaeus/Andersson)	Polydor 5170072 (F)	5170074/5170071
40	41	BACK TO FRONT * 4	Lionel Richie (Levine/Carmichael)	Motown 5300182 (F)	5300184/5300181
41	28	CONSCIENCE	The Beloved (Marsh/Marsh)	East West 4509914832 (W)	4509914834/-
42	31	US	Peter Gabriel (Lanois/Gabriel)	Realworld PGCD 7 (F)	PGMC 7/P7 7
43	NEW	NOW AIN'T THE TIME FOR YOUR TEARS	Wendy James (Kinsey)	MCA MCD 10800 (BMG)	MCC 10800/MCA 10800
44	30	NEVERMIND *	Nirvana (Vig/Nirvana)	DGDC DGCD 24425 (BMG)	DGCC 24425/DGCC 24425
45	26	ALL THE BEST	Leo Sayer (Courtney/Perry/Tarney)	Chrysalis CDCHR 1980 (E)	TCCHR 1980/CHR 1980
46	25	STAIN	Living Colour (St Germain/Living Colour)	Epic 4728562 (SM)	4728564/4728561
47	37	POP! - THE FIRST 20 HITS * 2	Erasure (Various)	Mute COMUTEL 2 (RTM/P)	CMUTEL 2/CMUTEL 2
48	54	THE BEST OF ROD STEWART * 4	Rod Stewart (Various)	Warner Bros 9263042 (W)	WX 314C/WX 314
49	49	EROTICA *	Madonna (Madonna/Pettibone/Betts)	Maverick/Sire 9362450312 (W)	WX 491C/WX 491
50	48	RAY CHARLES - THE LIVING LEGEND	Ray Charles (Various)	Arcade ARC 94642 (SM)	ARC 94644/-
51	73	SHEPHERD MOONS * 2	Enya (Ryan)	WEA 9031755722 (E)	WX 431C/WX 431

HIGHEST ENTRY

HIGHEST CLIMBER

TOP 20 COMPILATIONS

This Week	Last Week	Title	Artist	Label/CD (Distributor)	Cass/Vinyl
1	2	THE BODYGUARD (OST) * 3	Various	Arista 07822186992 (BMG)	07822186994/07822186991
2	5	MEGA DANCE - THE POWER ZONE	Various	EMI/Virgin/PolyGram CDEVP 4/TCCEVP 4/EVP 4 (E)	
3	1	HITS 93 VOL 1	Various	Telstar/BMG TCD 2641 (BMG)	STAC 2641/STAR 2641
4	4	LIPSTICK ON YOUR COLLAR (OST)	Various	PolyGram TV 5160862/5160864/5160861 (F)	
5	3	BLUES BROTHER SOUL SISTER	Various	Dino DINCD 56/DINMC 56/- (P)	
6	11	COUNTRY LOVE	Various	Telstar TCD 2645 (BMG)	STAC 2645/-
7	6	THE AWARDS 1993	Various	PolyGram TV 5160752 (F)	5160754/5160751
8	10	D-FROST - 20 GLOBAL DANCE WARNINGS	Various	Touchdown CTVCDD 114/CTVMC 114/CTVLP 114 (BMG)	
9	7	HEAD OVER HEELS (OST)	Various	Telstar TCD 2649/STAC 2649/STAR 2649 (BMG)	
10	8	SOUL MOODS	Various	EMI CDEM TV 71 (E)	TCEMTV 71/EMTV 71
11	9	CELTIC HEART	Various	RCA 74321131662 (BMG)	74321131664/-
12	NEW	YEAH YEAH YEAH YEAH/OUR TROUBLED YOUTH	Various/Bikini Kill/Huggy Bear	Catcall/Wijja Tuss 001/Tuss 001MC	
13	12	THE BEST OF THE CLASSICAL BITS	Various	Philips/PolyGram TV 4381662/4381664/- (F)	
14	13	NOW...! 23 * 3	Various	EMI/Virgin/PolyGram CDNOW 23/TCNOW 23/NOW 23 (E)	
15	15	THE ULTIMATE COUNTRY COLLECTION *	Various	Columbia MOODCD 26/MOODC 26/MOOD 26 (SM)	
16	NEW	RESERVOIR DOGS (OST)	Various	MCA MCD 10793 (BMG)	MCC 10793/-
17	17	DIRTY DANCING (OST) * 5	Various	RCA BD 86408 (BMG)	BK 86408/BL 86408
18	14	THE MEGA RAVE	Various	EMI/Virgin/PolyGram CDEVP 3 (E)	TCEVP 3/-
19	16	BRAM STOKER'S DRACULA (OST)	Various	Columbia 4727462/4727464/4727461 (SM)	
20	18	CLASSIC SALSOU MASTERCUTS VOL 1	Various	Mastercuts CUTSCD 10/CUTSMC 10/CUTSLP 10 (BMG)	

PLATINUM (100,000) GOLD (50,000) SILVER (25,000)
 * Panel sales increase of 50% or more over last week
 * Panel sales increase 100% or more over last week
 BPI awards are made on combined unit sales of cassette, CD and LP.
 Records with a dealer price of £2.70 or below require twice the sales quantity quoted above to obtain an award.
 © CIN Compiled by Gallup for Music Week. BBC and BARD Produced in cooperation with the BPI and BARD, based on a minimum sample of 500 record outlets incorporating LPs, Cassettes and CD sales. All rights reserved.

ARTISTS A - Z

4 OF US, The	64	LIVING COLOUR	46
ABBA	38	MADONNA	49.57
ALICE IN CHAINS	67	MILLER, Glenn	21
ARCHER, Tasmin	25	NIRVANA	44
ARRESTED DEVELOPMENT	21	PHELOUNG, Barrington/Janis KELLY	70
BELLY	59	PINK FLOYD	4
BELOVED, The	41	POISON	74
BLACK, Frank	9	PRINCE & THE NEW POWER GENERATION	54
BLIGE, Mary J	53	RADIOHEAD	66
BON JOVI	38.58	RAGE AGAINST THE MACHINE	17
BROOKS, Elkie	12	RED HOT CHILI PEPPERS	72
CARROLL, Dina	13	REM	8.29
CHARLES & EDDIE	65	RICHIE, Lionel	40
CHARLES, Ray	50	SAINT ETIENNE	28
CHER	37	SAYER, Leo	45
CLAPTON, Eric	2	SHAKESPEARS SISTER	75
CULT, The	31	SHAMEN, The	34
DEACON BLUE	33	SIMPLY RED	14
DULFER, Candy	71	SISTER SLEDGE	62
DURAN DURAN	27	SPIN DOCTORS	51
EAGLES	60	STEREO MCs	19
EAST 17	24	STEWART, Rod	11.48
EN VOGUE	15	STING	30
ENYA	51	SYSTEM 7	16
ERASURE	50	TAKE THAT	16
GABRIEL, Peter	42	U2	73
GENESIS	56.89	UGLY KID JOE	58
GO WEST	66	URE, Midge/ULTAVOX/BAND AID	32
GRIFITH, Nanci	18	VISAGE/PHOT	26
GUY, Buddy	38	VAN HALEN	63
HEAVEN 17	31	YOUNG, Neil	82
HOLLY, Buddy, & THE CRICKETS	23	ZINMAN, David/LONDON BINPONIETTA/UPSHAW	32
HOT CHOCOLATE	20		
HOTHOUSE FLOWERS	10		
JACKSON, Michael	7		
JAMES, Wendy	43		
KRAVITZ, Lenny	3		
LANG, KD	3		
LENNOX, Annie	6		