

TOP 75 SINGLES

14 DECEMBER 1991

THE OFFICIAL Music Week CHART

TITLES AZ (WRITERS)

This Week	Last Week	Title	Artist (Producer) Publisher	Label 7" (12") (Distributor) Cassette/CD
1	1	DON'T LET THE SUN GO DOWN ON ME	George Michael/Ellon John (Michael)Big Pig	Epic 6576467 (SM) 6576463/6576464/6576462
2	4	WHEN YOU TELL ME THAT YOU LOVE ME	Diana Ross (Asher) Empire/WC	TCEM 217/CDEM 217
3	5	JUSTIFIED AND ANCIENT	The KLF/Tammy Wynette (The KLF) EG/Zoo/WC/BMG	KLF Comms. KLF 991X (RTM/APT) KLF 99C/KLF 99CD
4	2	BLACK OR WHITE	Michael Jackson (Jackson/Bottrell) WC	Epic 6575987/6575986 (SM) 6575984/6575982
5	3	RIDE LIKE THE WIND	East Side Beat (no credit) WC	flr FIX 176 (FI) FCS 176/CD 176
6	14	DRIVEN BY YOU	Brian May (May/Richards) Queen/EMI	Parlophone 121R 6304 (E) TCR 6304/CDR 6304
7	22	TOO BLIND TO SEE IT	Kym Sims (Hurley) CC	Atco B 8667 (TI) (W) B 8667/CB 8667/CD
8	11	STARS	Simply Red (Levine/Hucknall) So What/EMI	East West YZ 626 (TI) (W) YZ 626C/YZ 626CD
9	NEW	IF YOU GO AWAY	New Kids On The Block (Afanasieff) WC	Columbia 6576667 (SM) 6576664/6576665
10	7	SMELLS LIKE TEEN SPIRIT	Nirvana (Vig/Nirvana) Virgin	DGC DGCS 5/DGCT 5 (BMG) /DGCT 5
11	6	ACTIV 8 (COME WITH ME)	Altern 8 (Altern 8) Kool Kat/Virgin	Network NWK(T) 34 (FI) NWKC 34/NWKC 34
12	13	ROCKET MAN (I THINK IT'S GOING TO BE A ...)	Kate Bush (Bush) PolyGram	Mercury (FI) TRIBO 2/TRIB 212/TRIMC2/TRICD 2
13	NEW	MYSTERIOUS WAYS	U2 (Lanois/Eno) Blue Mt	Island 121S1X (S) 509 (FI) CIS 509/CD 509
14	8	DIZZY	Vic Reeves & The Wonder Stuff (Glossop/Lowery/BMG)	Island SIGH 712/SIGH P12 (FI) SIGH412/SIGH 212
15	17	YOU SHOWED ME	Salt N' Pepa (Excalibur/The Invincibles) TRO-Essex	flr FIX 174 (FI) FCS 174/CD 174
16	9	SOUND	James (Youth) Blue Mt.	Fontana JIM 91 (FI) JIMC 91/UMCD 91
17	36	DON'T TALK JUST KISS	Right Said Fred/Jocelyn Brown (Tommy D) Hit&Run	Tug 112/SNOG 2 (BMG) CASNOG 2/CDXNOG 2
18	15	AM I RIGHT?	Erasure (Phillips) Musical Moments-Sonet/Andy Bell	Mute 1121MUTE 134/CDMUTE 1234 (RTM/P) CDMUTE 134
19	21	WE SHOULD BE TOGETHER	Cliff Richard (Richard/Moessl) Sony	EMI XMASG 91(-) Cliff Richard (Richard/Moessl) Sony TCXMAS 91/CDXMAS 91
20	33	THE BARE NECESSITIES MEGAMIX	UK Mixmasters (Wright) Campbell Connelly	Connect ZB 45135 (BMG) ZT 45136/ZK 45135/CD 45136
21	11	GET READY FOR THIS	2 Unlimited (Wilde/de Coster) MCA	PWL Continental PWL(T) 206 (W) PVMC 206/PWCD 206
22	10	PLAYING WITH KNIVES	Bizarre Inc (Meecham/Meredith/Turner) Schnozza	Vinyl Solution STORM 38S/STORM 38 (S) STORM 38C/STORM 38CD
23	28	MARTIKA'S KITCHEN	Martika (Paisley Park) WC	Columbia 6575687/6575688 (SM) 6575684/6575682
24	18	WAY OF THE WORLD	Tina Turner (Lord-Alge/Hammond/Lyle/Davies) Empire/Rondor/Gooding Inc	Capitol 112ICL 637/TCCL 637/CDCL 637 (E) Tina Turner (Lord-Alge/Hammond/Lyle/Davies) Empire/Rondor/Gooding Inc
25	31	JOSEPH MEGA-REMIX	Jason Donovan/Varios (Lloyd Webber/Wright) Really Useful	Really Useful RURIXP1 91/RURCS 91 (FI) Jason Donovan/Varios (Lloyd Webber/Wright) Really Useful RURCD 9
26	25	DIAMONDS & PEARLS	Prince & The New Power Generation (Prince/NPG) WC	Paisley Park W 00751 (TI) W 0075C/W 0075CDX
27	34	THE SHOW MUST GO ON	Queen (Queen/Richards) Queen/EMI	Parlophone 1121QUEEN 19 (E) /CDQUEEN 19
28	16	EXTACY	Shades Of Rhythm (Shades Of Rhythm) Perfect	ZTT ZANG 241 (TI) /ZANG 24CD
29	26	TENDER LOVE	Kenny Thomas (Green) EMI	Cooltempo COOL(X) 247 (E) COOLMC 247/COOLCD 247
30	19	IS THERE ANYBODY OUT THERE?	Bassheads (Bassheads/Imrei) JSE	Deconstruction/Parlophone (E) 121R 6303/TCR 6303/CDR 6303
31	NEW	COVER FROM THE SKY	Deacon Blue (Kelly) Poor	Columbia 6576737 (SM) 6576734/6576732
32	35	HOW CAN I KEEP FROM SINGING?	Enya (Ryan) EMI	WEA YZ 635/-YZ 635C/YZ 635CD (W)
33	20	WHEN A MAN LOVES A WOMAN	Michael Bolton (Afanasieff/Bolton) WC	Columbia 6574887 (SM) 6574884/6574885
34	70	SEVEN O'CLOCK NEWS/SILENT NIGHT	Simon And Garfunkel (Simon/Halee) Pattern	Columbia 6576537 (SM) /6576532
35	30	WONDERFUL TONIGHT (LIVE)	Eric Clapton (Tietelman) WC	Duck W 0069 (W) W 0069C/W 0069CD
36	48	RUNNING OUT OF TIME	Digital Orygasm (Adams/Khan/Jade 4U) Be/S	Dead Dead Good /GOOD 9T (RE/P)
37	45	EVERYBODY MOVE	Cathy Dennis (Dennis/Bodger/Pettibone) EMI/WC	Polydor CATHIX1 5 (FI) CATHC 5/CATHD 5

This Week	Last Week	Title	Artist (Producer) Publisher	Label 7" (12") (Distributor) Cassette/CD
38	24	RHYTHM IS A MYSTERY	K-Klass (K-Klass) MCA	Deconstruction/Parlophone 121R 6302 (E) TCR 6302/CDR 6302
39	NEW	IT'S THE END OF THE WORLD AS WE KNOW IT	REM (Lit/River) WC	IRS IRM 180 (BMG) IRM 180/DIRM 180
40	43	THE YODELING SONG	Frank Ifield/Backroom Boys (Backroom Boys) MCA/Telstar	EMI 7YODEL 112YODEL 1 (E) YODELCD 1
41	23	HOLE HEARTED	Extreme (Betencourt) Rondor	A&M AM(Y) 839 (FI) AMMC 839/AMCD 839
42	38	HOW CAN I LOVE YOU MORE?	M People (M People/Heard) BMG/CC	Deconstruction/RCA PB 44855 (BMG) PT 44856/PK 44855/CD 44856
43	47	LOVE HURTS	Cher (Zito) Acuff Rose-Opryland	Geffen GFS(T) 16 (W) PK 6536/CDST 16
44	24	SO REAL	Love Decade (Love Decade) CC	All Around The World 112(GLOBE 106 (BMG) CAGLOBE 106/CDGLOBE 106
45	49	I'LL BE HOME THIS CHRISTMAS	Shakin' Stevens (David) Shaky/First Cut	Epic (SM) 6576501/-6576504/6576502
46	NEW	U.H.F./EVERYTHING	UHF (Moby) CC	XL XLS 25/XL T 35 (W) /XL T 25CD
47	NEW	ABIDE WITH ME	Vic Reeves (The Grid) Virgin	Sense SIGH 713/SIGH 1213 (FI) SIGH 413/SIGH 213
48	NEW	OPEN YOUR EYES	Black Box (Groove Melody) WC	Deconstruction/RCA PB 45053/PT 45054 (BMG) Black Box (Groove Melody) WC PK 45053/PT 45054
49	40	KILLER... (EP)	Seal (Horn) MCA/Beethoven St/Virgin	ZTT ZANG 231 (W) ZANG 232/ZANG 23CD
50	NEW	I DON'T MAKE YOU LOVE ME	Bonnie Raitt (Was/Raitt) Almo/Brio Blues/Hayes St	Capitol CL 639 (-) E) TCCL 639/CDCL 639
51	NEW	I DON'T WANNA TAKE THIS PAIN	Dannii Minogue (Adams/Freilich) IMNEM/Island	MCA MCSR 1600 (BMG) MCSR 1600/WCST 1600
52	29	WICKED LOVE	Oceanic (Harry) WC	Dead Dead Good GOOD 5T (RE/P) GOOD 5/CD 5CD
53	37	YOU TO ME ARE EVERYTHING	Sonia (Wright) EMI	IQ ZB 45121/ZT 45122 (BMG) ZK 45121/ZD 45122
54	51	LET IT REIGN	Infer City (Saunderson/Archer/Peat) Drive-On/Kool Kat/Virgin	Ten TEN(X) 392/TCNC 392/TENC 392 (FI)
55	39	IF YOU WERE WITH ME NOW	Kylie Minogue/Keith Washington (Stock/Waterman) Various	PWL PVL(T) 208/PWMC 208 (W) PWCD 208
56	50	CALL MY NAME	GMD (Richard) Ray Un/Ltd/Virgin	Virgin VS(T) 1380 (FI) VSC 1380/WCSD 1380
57	46	FAITH (IN THE POWER OF LOVE)	Rozalla (3M) Peer	Caluse 8112/LOSE 15 (BMG) PLOSE 15/CDLOSE 15
58	42	SPENDING MY TIME	Roxette (Ofverman) Jimmy Fun/EMI	EMI EM 216 (-) E) TCEM 216/CD 215
59	41	SEND ME AN ANGEL	Scorpions (Olson/Scorpions) PolyGram	Vertigo VER(X) 60 (FI) VERMC 60/VERCD 60
60	NEW	SILENT NIGHT	Sinead O'Connor (O'Connor/Gabriel) no copyright	ENYMC 652/ENYCD 652
61	NEW	HORSEPOWER	Ravesignall III (Bolland) R&S	R&S/Outer Rhythm /RSUK 6 (RTM/P) /RSUK 6CD
62	58	FRIENDSHIP	Sabrina Johnston (Johnston/Johnston) MCA/CC	East West YZ 637 (TI) (W) YZ 637C/YZ 637CD
63	62	I LOVE YOUR SMILE	Shanice (Walden) Gratitude Sky (Carlin Music)	Motown ZB 44907/ZT 44908 (BMG) ZK 44907/ZD 44908
64	NEW	FAIRYTALE OF NEW YORK	The Pogues feat Kirsty MacColl (Lillywhite) Stiff	PM YZ 628 (-) (W) YZ 628C/YZ 628CD
65	NEW	LOVE SEE NO COLOUR	The Farm (McPherson) Virgin	Produce MILK(T) 106 (FI) MILK 106C/CDMILK 106
66	38	JUDGE FUDGE	Happy Mondays (Oakenfold/Osborne) London	Factory FAC 3327/FAC 332 (FI) FAC 332C/FAC 332 CD
67	NEW	GROOVE TO MOVE	Channel X (MNO) All Boys	PWL Continental PWL(T) 209 (W) PVMC 209/PWCD 209
68	NEW	FLESH	A Split Second (A Split Second) Be's/Micart	flr /FX 178 (FI) /FX 178CD
69	NEW	THE CHRISTMAS SONG (CHESTNUTS ...)	Nat King Cole (Gillett) WC	Capitol CL 641 (-) (FI) TCCL 641/CDCL 641
70	NEW	WALKING IN THE AIR (REMIX)	Digital Dream Baby/Snowman (no credit) Highbridge/Faber	Columbia 6576067/6576066 (SM) /6576062
71	44	FALL AT YOUR FEET	Crowded House (Froom/Finn) EMI	Capitol CL 626 (-) E) TCCL 626/CDCLX 626
72	53	THE OMEN	Program 2 Beltram (Program 2 Beltram) R&S/Program 2/CC	R&S/Outer Rhythm /RSUK 7 (RTM/P) /RSUK 7CD
73	NEW	HOME FOR CHRISTMAS DAY	The Red Car And The Blue Car (Moassa) Moassa	Virgin VS 1394 (-) (FI) VSC 1394
74	68	MEMORIES	Beverly Craven (Samwell-Smith) WC	Epic 6576617 (SM) 6576614/6576612
75	75	I'LL BE YOUR FRIEND	Robert Owens (Morales) Def Mix/EMI	Perfecto PB 45161/PT 45162 (BMG) PK 45161

As used by Top Of The Pops and Radio One

PLATINUM (600,000) GOLD (400,000) SILVER (200,000)
 * indicates title available in short music
 † Panel sales increase over last week
 ‡ Panel sales of 50% or more over last week
 © CIN. Compiled by Gallup for Music Week, BBC and BARD. Produced in cooperation with the BPI and ODPA, based on a minimum sample of 500 record outlets, incorporating 7, 12", Cassettes and CD single sales. All rights reserved.

Sabrina Johnston Friendship

Out Now. Mixes by Band of Gypsies and Frankie Knuckles. YZ637/T/CD

DISTRIBUTED BY WARNER MUSIC UK. A TIME WARNER CO. ORDER FROM YOUR WARNER MUSIC UK SALESPERSON OR CALL TELESALES ON 081 998 5929

12 Top scorer
Maurice Jarre's film music in focus

14  **Tammy wins**
Wynette joins KLF on road to Jerusalem

20 Lucky man
Blues giant Hooker re-enters indie chart

22  **Blind faith**
Kym Sims focuses on the dancefloor

music week

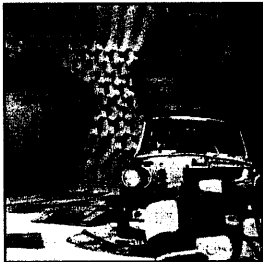
datafile

The Information Source for the Music Industry

14 DECEMBER 1991

CHART FOCUS

Impressive sales for all of the top three singles this week, with **George Michael & Elton John's** *Don't Let The Sun Go Down On Me* notching up a second week at the summit as its sales surge by a further 50%. **Diana Ross** and the **KLF** occupy silver and bronze positions, but will most likely advance no further, as they are still way behind George and Elton, and have a new problem to contend with next week in the form of *Bohemian Rhapsody*.



of **Diana Ross's** current number two hit *When You Tell Me That You Love Me*. The success of Ross's single has worked wonders for her latest album, *The Force Behind The Power*, which failed to chart when first released in August. It makes a belated and impressive debut this week at 14.

Against expectations, the week's highest new entry comes not from **U2**, but from **New Kids On The Block**, whose *If You Go Away* debuts at number nine, their highest opener for some time. Their 11th hit, it's the first not produced by their mentor Maurice Starr, being helmed instead by Walter Afanasieff. Walter co-wrote the song with lyricist John Bettis.

Bettis is currently hot, having also penned the lyrics

The week's other major album move comes from **Michael Crawford**, whose *Performs Andrew Lloyd Webber* vaults from number 21 to number five after his appearance on *Wogan*.

Albums generally are

extremely buoyant: 1991 has been a difficult year for retailers, with sales well down on 1989 and 1990 levels, but the recent glut of superstar product has helped spark a mini-revival. Indeed, album sales for each of the past four weeks have exceeded their 1990 levels. This week's gain (21 per cent) must, however, be considered within context. Weekend shopping last year was severely depressed by heavy snow.

R.E.M. register their sixth Top 40 single since March with *It's The End Of The World As We Know It*. No other act has had so many Top 40 hits this year.

Finally, a warm welcome to the singles chart for **Bonnie Raitt**, who enters at number 50 with *I Can't Make You Love Me*. Though she's had some success with albums, it's Bonnie's first ever hit single, at the age of 42. Her first American hit was *Runaway*, as long ago as 1977.

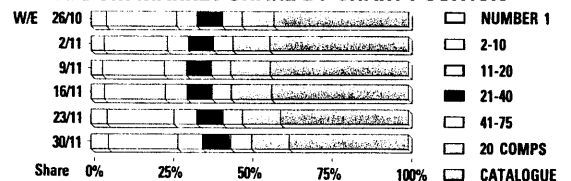
Alan Jones

UPDATE

SALES

Index of unit sales. 100=weekly average in 1990	Last week	This week	% diff	This week last year	% diff
Albums	186	218	+17	+21	
Singles	117	117	n/c	+8	
Music Video	291	323	+11	+1	

ALBUM MARKET SHARE BY CHART POSITION



Share 0% 25% 50% 75% 100%
Four week rolling averages. © CIN

EVERGREENS

- | | |
|---|--|
| 1 GREATEST HITS VOL 1
Queen Parlophone (465) | 6 WATERMARK
Enya WEA (166) |
| 2 THE IMMACULATE COLLECTION
Madonna Sire (55) | 7 THE ESSENTIAL PAVAROTTI
Luciano Pavarotti Decca (91) |
| 3 BAT OUT OF HELL
Meat Loaf Cleveland (447) | 8 LEGEND Bob Marley & The Wailers
Tuff Gong (295) |
| 4 IN CONCERT
Pavarotti/Domingo/Carreras, Decca (67) | 9 LIVE MAGIC
Queen Parlophone (95) |
| 5 VERY BEST OF ELTON JOHN
Elton John Rocket (57) | 10 SERIOUS HITS... LIVE!
Phil Collins Virgin (56) |

Albums must have appeared in the Top 200 artist chart for 52 weeks or more. Brackets denote weeks in chart. Compiled by ERA from Gallup data Nov 4-30

ANALYSIS

When Enya's new *Shepherd Moons* album on WEA debuted at number one in the album chart a month ago, there were more than a few puzzled faces in the music industry.

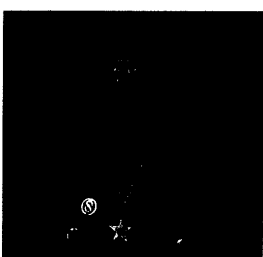
But the surest clue to the Irish artist's stunning first week performance is apparent from this week's Evergreen's chart (see right).

Steady sales over a three-year period meant there was a huge constituency of Enya fans ready and primed for new product. She had become a major star virtually by stealth.

It's a case that proves the virtues of longevity in a title.

But with the turnover of albums increasing frighteningly, the question is whether recent albums can ever hope to achieve such "legs". Most high-debating albums this autumn have had to content themselves with a speedy move downwards.

One exception, however, comes from the other Warner



Music label, East West, and *Simply Red's Stars*.

After entering at number one in October, it stayed there for another week before dropping to two, then back to number one, down to two, to six (where it stayed for another week) before rising back up to number four, then three last week where it stays this week.

Few other original artist albums have been able to hold their own in this way

Not only are a large number of greatest hits collections released at this time of year, but release schedules overall, reach their peak.

Already, this year's number of chart entries — 366 — is more than last year's total of 351. This means the consumer has more choice and turnover in the chart is a lot quicker.

East West marketing director Elyse Taylor puts *Simply Red's* success down to strong songs and meticulous marketing.

"The record speaks for itself and we didn't need TV advertising to get it straight at number one," says Taylor.

The success of two singles meant that East West could delay TV advertising until this week. That should sustain sales through Christmas and a tour in the new year will bolster the campaign. This week, *Stars* shipped another 250,000 copies.

As Taylor admits, though, it's difficult to imagine any album matching the incredible chartlife of albums such as *Bat Out Of Hell*.

Meatloaf might disagree. He has his *Bat Out Of Hell Part Two* released next year.

Nick Robinson

ORGANISE EARLY, YOUR TRAVEL TO MIDEM '92
19-23 JANUARY

FLIGHTS - FERRIES
BOATS & CARS - VILLAS
APARTMENTS - HOTELS

CONTACT THE OFFICIAL UK TRAVEL ORGANISERS -
premierpace
071 828 4530
for immediate information & brochure.
Or, clip and return the coupon below.

MIDEM '92 TRAVEL & HOTEL ARRANGMENTS
To: Premierpace, The official UK travel organisers,
44 Churton Street, London SW1 2LP.
Tel: 071 828 4530. Fax: 071 630 7719

Please send me the Midem '92 Travel Brochure

Please send me the Midem '92 Travel Brochure and contact me later with more information.

Name _____
Company _____
Address _____
Tel _____

TOP 75 ARTIST ALBUMS

THE OFFICIAL **music week** CHART

This Week	Last Week	Title	Artist (Producer)	Label/Cassette (Distributor) CD/LP	This Week	Last Week	Title	Artist (Producer)	Label/Cassette (Distributor) CD/LP
1	1	GREATEST HITS II ★ 2	Queen (Richards/Queen)	Parlophone TCMPTV 2 (E) CDPMTV 2/PMPTV 2	38	36	HIS GREATEST HITS ●	David Essex (Various)	Mercury 5103084 (F) 5103082/5103081
2	2	DAGEROUS ★ 3	Michael Jackson (Riley/Jackson/Swedien/Bottrell)	Epic 4658024 (SM) 4658022/4658021	39	40	LIVE YOUR LIFE BE FREE ●	Belinda Carlisle (Novels/Feldman/Presley/Munday)	Virgin TCV 2680 (F) CDV 2680V 2680
3	3	STARS ★ 3	Simply Red (Levine)	East West WX 427C (W) 9031752842/WX 427	40	39	EXTREME II PORNOGRAFFITTI ●	Extreme (Wagner)	A&M 3953134 (F) 3953132/3953131
4	6	SIMPLY THE BEST ★ 2	Tina Turner (Various)	Capitol TCESTV 1 (E) CDESTV 1/ESTV 1	41	34	INNUENDO ★	Queen (Queen/Richards)	Parlophone TPCSD 115 (E) CDPSCD 115/PCSD 115
▲ 5	21	PERFORMS ANDREW LLOYD WEBBER	Michael Crawford/RPO (Jarrot/Reedman)	Telstar STAC 2544 (BMG) TCD 2544/STAR 2544	42	48	JOYRIDE ★	Roxette (Olwerman)	EMI TCEMD 1019 (E) CDEMD 1019/EMD 1019
6	7	TIME, LOVE & TENDERNES ★ 2	Michael Bolton (Afanasieff/Bolton)	Columbia 4678124 (SM) 4678122/4678121	43	45	ESSENTIAL PAVAROTTI II ★	Luciano Pavarotti (Various)	Decca 4304704 (F) 4304702/4304701
7	4	WE CAN'T DANCE ★	Genesis (Genesis/Davis)	Virgin GENMC 3 (F) GENCD 3/GENLP 3	44	NEW	ORB'S ADVENTURES BEYOND... (The Orb) (Paterson/Various)	Big Life BLRDMC 5 (F) BLRCD 5/BLRDL 5 (RT-F)	
8	9	GREATEST HITS ★ 9	Queen (Various)	Parlophone TCEMTV 30 (E) CDEMTV 30/EMTV 30	45	70	THE BROADWAY I LOVE	Placido Domingo/LSO/Kohn (Shepard)	East West 9031755904 (W) 9031755902/9031755901
9	8	FROM TIME TO TIME - THE SINGLES COLLECTION ★ 2	Paul Young (Latham/Various)	Columbia 4688254/4688252/4688251 (SM)	46	58	MOVE TO THIS ●	Cathy Dennis (Dennis/Bodger/Danny D. Rodgers)	Polydor 8495034 (F) 8495032/8495031
10	11	TOGETHER WITH CLIFF	Cliff Richard (Richard/Moessl/Pruess)	EMITCEMD 1028 (E) CDEMC 1028/EMD 1028	47	53	YOURS SINCERELY	Harry Secombe (Cass)	Philips 5107324 (F) 5107322/5107321
11	5	ACHTUNG BABY ★	U2 (Lanois/Eno)	Island UC 28 (F) CIDU 28/U 28	48	50	THE IMMACULATE COLLECTION ★ 6	Madonna (Various)	Sire WX 370C (W) 759264402/WX 370
12	10	SHEPHERD MOONS ★	Enya (Ryan)	WEA WX 431C (W) 9031755722/WX 431	49	38	LOVESCAPE	Neil Diamond (Various)	Columbia 4688904 (SM) 4688902/4688901
▲ 13	16	THE DEFINITIVE SIMON AND GARFUNKEL ★	Simon And Garfunkel (Various)	Columbia MOODC 21/MOODCD 21 (SM)	50	41	SEX MACHINE - THE VERY BEST... ●	James Brown (Brown/Various)	Polydor 8458284 (F) 8458282/8458281
▲ 14	NEW	THE FORCE BEHIND THE POWER	Diana Ross (Asher/Carmichael/Wonder)	EMI TCEMD 1023 (E) CDEMD 1023/EMD 1023	51	43	MIDNIGHT MOODS - THE LOVE COLLECTION	George Benson (Various)	Telstar STAC 2450/TCD 2450/STAR 2450 (BMG)
15	17	VOICES ★	Kenny Thomas (Green/Percy/Lever/Fermie/Gunner)	Cooltempo ZCTLP 24 (E) CCD 1890/CTL P 24	52	NEW	SWALLOW THIS LIVE	Poison (Poison)	Capitol TCESTU 2159 (F) CDESTU 2159/EUTV 2159
16	15	TOGETHER AT LAST ●	Richard Clayderman/James Last (Various)	Decca Delphine/Polydor 5115254 (F) 5115252/5115251	53	56	IN CONCERT ★ 5	Luciano Pavarotti/Placido Domingo/Jose Carreras (Raeburn)	Decca 4304334/4304332 (F) 4304332/4304331
17	12	TIMELESS - THE VERY... ●	Neil Sedaka (Various)	Flying Music/Polydor (F) 5114424/5114422/5114421	54	63	THE VERY BEST OF ELTON JOHN ★ 7	Elton John (Dudgeon/Thomas/John/Franks/Wasi)	Rocket 8469474 (F) 8469472/8469471
18	13	REAL LOVE	Lisa Stansfield (Devaney/Morris)	Arista 412300 (BMG) 282300/212300	55	59	USE YOUR ILLUSION I ●	Guns N' Roses (Clink/Guns N' Roses)	Geffen GEFC 24415 (BMG) GEFD 24415/GEF 24415
19	14	DISCOGRAPHY ★	Pet Shop Boys (Various)	Parlophone TCMPTV 3 (E) CDPMTV 3/PMPTV 3	56	42	I WILL CURE YOU ●	Vic Reeves (Various)	Sense SIGH 411 (F) SIGH 211/SIGH 111
20	18	THE COMMITMENTS (OST) ●	The Commitments (Bushnell/Killen/Parker)	MCA MCAC 10286 (BMG) MCAD 10286/MCA 10286	57	44	C.M.B. ●	Color Me Badd (Howie T)	Giant WX 429C (W) 759244292/WX 425
▲ 21	31	THE GREATEST HITS ●	Salt-N-Pepas (Hurdy Luv Bug/The Invincibles/Excalibur)	ffr: 8282914/8282912/8282911 (F) 8282910/8282908/8282907	58	46	LIVE BABY LIVE	INXS (Opitz/INXS)	Mercury 5105804 (F) 5105802/5105801
22	22	CHORUS ★	Erasure (Phillips)	Mute CSTUMM 95 (RTM/P) CDSTUMM 95/STUMM 95	59	47	HEADLINES AND DEADLINES - THE HITS... ●	A-Ha (Various)	Warner Brothers WX 450C/75926732/WX 450 (W)
23	28	OUT OF TIME ★ 2	REM (Lit/REM)	Warner Brothers WX 404C (W) 7592924962/WX 404	60	54	USE YOUR ILLUSION II ●	Guns N' Roses (Clink/Guns N' Roses)	Geffen GEFC 24420 (BMG) GEFD 24420/GEF 24420
24	19	WAKING UP THE NEIGHBOURS ★	Bryan Adams (Lange)	A&M 3971644 (F) 3971642/3971641	61	60	THE ULTIMATE COLLECTION	Marc Bolan & T Rex (Visconti/Bolan)	Telstar STAC 2539 (BMG) TCD 2539/STAR 2539
25	16	JOSEPH...AMAZING TECHNICOLOR DREAMCOAT ★	Joseph (Lloyd Webber/Wright)	Really Useful 5113045/5113025/511301 (F) 5113043/5113023/511301	62	55	BEST OF HALL & OATES - LOOKING... ●	Darryl Hall & John Oates (Various)	RCA/Arista PK 90388 (BMG) PK 90388/PD 90388/P 90388
26	23	MEMORIES	Foster & Allen (Hynes)	Telstar STAC 2527 (BMG) TCD 2527/STAR 2527	63	57	GREATEST HITS	Jason Donovan (Stock/Waterman/Aitken)	PWL HFC 20 (W) HFC 20/HF 20
27	25	LOVE HURTS ★ 2	Cher (Various)	Geffen GEFC 24427 (BMG) GEFD 24427/GEF 24427	64	61	BLUE LIGHT, RED LIGHT ●	Harry Connick Jr. (Freeman)	Columbia 4690874 (SM) 4690872/4690871
28	20	SEAL ★	Seal (Horn)	ZTT ZTT 9C (W) 903174557/ZTT 9	65	62	LOVE AND KISSES AND... ●	Dannii Minogue (Moody/Bell/LA Mix)	MCA MCAC 10496 (BMG) MCAD 10496/MCA 10340
29	32	THEMES & DREAMS	The Shadows (The Shadows)	Polydor 5113744 (F) 5113742/5113741	66	52	IMAGES - THE BEST OF JEAN MICHEL JARRE	Jean Michel Jarre (Jarre)	Dreyfus 5113064/5113062/5113061 (F) 4302102/4302101
30	26	BEVERLY CRAVEN ★	Beverly Craven (Samwell/Smith)	Epic 4670534 (SM) 4670532/4670531	67	68	THE ESSENTIAL PAVAROTTI ★ 3	Luciano Pavarotti (Various)	Decca 4302104 (F) 4302102/4302101
31	24	ON EVERY STREET ★ 2	Dire Straits (Knopfler/Dire Straits)	Vertigo 5101604 (F) 5101602/5101601	68	64	EMOTIONS ●	Mariah Carey (Afanasieff/Civilles/Cole/Carey)	Columbia 4688514 (SM) 4688512/4688511
32	29	THE UNFORGETTABLE NAT KING COLE	Nat King Cole (Various)	EMI TCEMTV 61/CDEMTV 61/EMTV 61 (E)	69	65	WALL OF FISTS ●	Slade (Chandler/Lea)	Polydor 5116124 (F) 5116122/5116121
33	30	GREATEST HITS ★ 4	Eurythmics (Stewart/Williams/Iovine)	RCA PK 74856 (BMG) PD 74856/PL 74856	70	51	LIVE MAGIC ★	Queen (Queen/Khalaf)	Parlophone TCEMC 3519 (E) CDP 7464132/EMC 3519
▲ 34	49	THE VERY BEST OF DANIEL O'DONNELL (RYAN)	Daniel O'Donnell (Ryan)	Ritz RITZBL 700 (PRISM/TRD) RITZBLD 700/	71	69	LET'S GET TO IT	Kylie Minogue (Stock/Waterman)	PWL HFC 21 (W) HFC 21/HF 21
35	35	DIAMONDS AND PEARLS ●	Prince & The New Power Generation (Prince)	Pauley Park WX 432C (W) 759253792/WX 432	72	NEW	CHRISTMAS WITH BING CROSBY	Bing Crosby (Various)	Telstar STAC 2468 (BMG) TCD 2468/STAR 2468
36	33	NEVERMIND	Nirvana (Vig/Nirvana)	DGC DGCC 24425 (BMG) DGC 24425/DGC 24425	73	71	BAT OUT OF HELL ★ 6	Metallica (Rundgren/Gallus)	Cleveland Int 4182419 (SM) CDP 82419/EPC 82419
37	37	AUBERGE ★	Chris Rea (Rea/Kelly)	East West 9031735804 (W) 9031735802/9031735801	74	RE	THE PHANTOM OF THE OPERA ★ 3	Original Cast (Lloyd Webber)	Polydor POLHC 33 (F) 8315632/POLH 33
					75	RE	24 NIGHTS ●	Eric Clapton (Titelman)	Duck WX 373C (W) 759264202/WX 373

TOP 20 COMPILATIONS

14 DECEMBER 1991

This Week	Last Week	Title	Label/Cassette (Distributor) CD/LP
1	1	NOW THAT'S WHAT I CALL MUSIC 20	EMI/Virgin/PolyGram TCONOW 20/CDNOW 20/NOW 20 (E)
2	3	ESSENTIAL OPERA ●	Decca 4338224 (F) 4338222/4338221
3	2	MOODS ●	Virgin Television VTMC 5 (F) VTCD 5/VTLP 5
4	NEW	STEAMIN! - HARDCORE '92 ●	Cooke Jar JARTC 1 (F) JARCD 1/JARTV 1
5	4	BEST OF DANCE '91	Telstar STAC 2537 (BMG) TCD 2537/STAR 2537
6	5	SMASH HITS 1991 ★	Dover ZDD 28 (E) CCD 28/ADD 28
7	4	LOVE AT THE MOVIES	Telstar STAC 2545 (BMG) TCD 2545/STAR 2545
8	11	PARTY MIX	Dino DINMC 32 (P) DINCD 32/DINTV 32
9	6	HARDCORE ECSTASY	Dino DINMC 29 (P) DINCD 29/DINTV 29
10	7	THE GREATEST HITS OF 91	Telstar STAC 2536/TCD 2536/STAR 2536 (BMG)
11	12	TWO ROOMS - ELTON JOHN & BERNIE TAUPIN	Mercury 8457494/8457492/8457491 (F)
12	9	MORE ROCK 'N' ROLL LOVE SONGS	Dino DINMC 30/DINCD 30/DINTV 30 (P)
13	NEW	CHRISTMAS LOVE SONGS	Arcade ARC 948204 (SM) ARC 948202/ARC 948201
14	17	A CLASSIC CHRISTMAS	EMI TCEMTV 62 (E) CDEMTV 62/EMTV 62
15	18	IT'S CHRISTMAS	EMI TCEMTV 49 (E) CDEMTV 49/EMTV 49
16	13	CLASSICAL MASTERS	Telstar STAC 2549 (BMG) TCD 2549/STAR 2549
17	16	LEGENDS OF SOUL - A WHOLE STACK ...	Telstar STAC 2489/TCD 2489/STAR 2489 (BMG)
18	10	DANCE ENERGY 3	Virgin Television VTMC 6 (F) VTCD 6/VTLP 6
19	14	AWESOME 2 ●	EMI/Virgin/PolyGram TCEVP 1 (E) CDEVP 1/EVP 1
20	15	BURNING HEARTS	Telstar STAC 2492 (BMG) TCD 2492/STAR 2492

ARTISTS A-Z

A HA	58	ORB	The	58
ADAMS, Bryan	24	PAVARTOTTI, L.P. DOMINGO, J. CARRERAS		44
BENSON, George	51	PAVARTOTTI II, Luciano		43
BOLAN, Marc & T Rex	61	PET SHOP BOYS		19
BOLTON, Michael	6	PHANTOM OF THE OPERA, The		11
BROWN, James	50	POISON		35
CAREY, Mariah	68	PRINCE & THE NEW POWER GENERATION		52
CARLISLE, Belinda	39	QUEEN	1 8 14 20	27
CHEER	27	REA, Clive		37
CLAPTON, Eric	75	REEVES, Vic		56
CLAYDERMAN, Richard/James Last	16	REM		23
COLE, Nat King	32	RICHARD, Cliff		10
COLTRANE, John	53	ROSS, Diana		12
COMMITMENTS, The	20	ROKE ITE		44
CONNICK JR, Harry	64	SALT N PEPA		21
CRAVEN, Beverly	30	SEAL		28
CRAWFORD, Michael/RPO	5	SECOMBE, Harry		47
CROSBY, Bing	72	SEDAKA, Neil		17
DENNIS, Cathy	46	SHADOWS, The		29
DIAMOND, Neil	49	SIMON AND GARFUNKEL		13
DIRE STRAITS	31	SIMPLY RED		3
DOMINGO, Placido/LSG/KOHN	45	SI AIF		69
DONOVAN, Jason	63	STANSFIELD, Lisa		18
DONOVAN, Jason/ORIGINAL LONDON CAS	25	THOMAS, Kenny		15
ENYA	12	TURNER, Tina		4
ERASURE	22	UZ		11
ESSEX, David	38	YOUNG, Paul		9
EURYTHMICS	33			
EXTREME	40			
FOSTER & ALLEN	26			
GENESIS	76			
GUNS N' ROSES	55			
HALL, Daryl & John Oates	62			
INXS	58			
JACKSON, Michael	2			
JARRE, Jean Michel	66			
JOHN, Elton	54			
MADONNA	48			
MEATLOAF	73			
MINOGUE, Dannii	65			
MINOGUE, Kylie	71			
NIRVANA	36			
O'DONNELL, Daniel	34			

★ Platinum (200,000) ● Gold (100,000) ○ Silver (50,000)
 ▲ Sales increase of 50 to 99% over last week
 ▲ Sales increase 100% or more over last week
 BPI awards are made on combined unit sales of cassettes, CDs and LPs.
 Records with a dealer price of £2.79 or below require twice the sales quantity quoted above to obtain an award.
 © CIN. Compiled by Gallup for Music Week. BBC and BARD. Produced in cooperation with the BPI and BARD, based on a minimum sample of 500 record outlets. Incorporating LPs, Cassettes and CD sales. All rights reserved.