

VE MAY 24, 1986
 ALLUP UK SINGLES
 ALLUP UK ALBUMS
 MPACT DISCS
 WELVE INCH

CHARTS

GALLUP UK SINGLES

THIS WEEK	LAST WEEK	WEEKS IN CHART	
1	1	3	THE CHICKEN SONG/I'VE NEVER MET A NICE SOUTH AFRICAN , Spitting Image, Virgin
2	2	4	ON MY OWN , Patti LaBelle/Michael McDonald, MCA
3	3	5	LESSONS IN LOVE , Level 42, Polydor
4	7	5	SLEDGEHAMMER , Peter Gabriel, Virgin
5	17	3	SPIRIT IN THE SKY , Doctor And The Medics, IRS
6	11	4	SNOOKER LOOPY , Matchroom Mob with Chas And Dave, Rockney
7	4	10	ROCK ME AMADEUS , Falco, A&M
8	13	8	WHY CAN'T THIS BE LOVE , Van Halen, Warner Bros
9	25	2	ROLLIN' HOME , Status Quo, Vertigo
10	5	5	LIVE TO TELL , Madonna, Sire
11	8	7	GREATEST LOVE OF ALL , Whitney Houston, Arista
12	20	3	ROCK LOBSTER , B52s, Island
13	14	7	THERE'LL BE SAD SONGS (TO MAKE YOU CRY) , Billy Ocean, Jive
14	10	7	CAN'T WAIT ANOTHER MINUTE , Five Star, Tent
15	6	10	WHAT HAVE YOU DONE FOR ME LATELY? , Janet Jackson, A&M
16	34	3	ADDICTED TO LOVE , Robert Palmer, Island
17	16	6	ALL AND ALL , Joyce Sims, London
18	9	5	I HEARD IT THROUGH THE GRAPEVINE , Marvin Gaye, Motown
19	55	2	HOLDING BACK THE YEARS , Simply Red, Elektra
20	35	4	SET ME FREE , Jaki Graham, EMI
21	12	8	A DIFFERENT CORNER , George Michael, Epic
22	18	6	YOU AND ME TONIGHT , Aurrá, 10 Records
23	29	6	ROUGH BOY , ZZ Top, Warner Bros
24	19	6	I'LL KEEP ON LOVING YOU , Princess, Supreme
25	22	4	BOYS DON'T CRY , Cure, Fiction
26	15	9	A KIND OF MAGIC , Queen, EMI
27	—	1	WHO MADE WHO , AC/DC, Atlantic A9425
28	39	4	SINFUL , Pete Wylie, MDM
29	23	7	TENDER LOVE , Force M.D.s, Tommy Boy
30	—	1	MINE ALL MINE/PARTY FREAK , Cashflow, Club JAB30
31	36	5	IF SHE KNEW WHAT SHE WANTS , Bangles, CBS
32	26	4	YOUR LATEST TRICK , Dire Straits, Vertigo
33	21	7	LOOK AWAY , Big Country, Mercury

34	—	1	LOVE TOUCH (FROM LEGAL EAGLES) , Rod Stewart, Warner Bros W8668
35	—	1	I CAN'T WAIT , Nu Shooz, Atlantic A9446
36	24	11	SECRET LOVERS , Atlantic Starr, A&M
37	—	1	CAN'T GET BY WITHOUT YOU , Real Thing, PRT 7P352
38	65	2	BAD BOY , Miami Sound Machine, Epic
39	85	2	TIME , Freddie Mercury, EMI
40	53	2	BASSLINE , Mantronix, 10 Records
41	45	5	RULES AND REGULATIONS (EP) , Fuzzbox, Vindaloo
42	28	9	THE FINEST , SOS Band, Tabu
43	47	3	OVER THE WEEKEND , Nick Heyward, Arista
44	32	10	WONDERFUL WORLD , Sam Cooke, RCA
45	30	7	ALL THE THINGS SHE SAID , Simple Minds, Virgin
46	31	10	LIVING DOLL , Cliff Richard And The Young Ones, WEA
47	—	1	DISENCHANTED , Communards, London LON89
48	33	10	TOUCH ME (I WANT YOUR BODY) , Samantha Fox, Jive
49	27	6	JUST SAY NO , Cast Of Grange Hill, BBC
50	54	3	ASK THE LORD , Hipsway, Mercury
51	43	12	YOU TO ME ARE EVERYTHING , Real Thing, PRT
52	51	3	FREEWAY OF LOVE , Aretha Franklin, Arista
53	49	3	THE HEART OF ROCK AND ROLL , Huey Lewis And The News, Chrysalis
54	37	3	THE BIG SKY , Kate Bush, EMI
55	50	2	SITTING ON TOP OF THE WORLD , Liverpool F.C., Columbia
56	62	2	HUNGRY FOR HEAVEN , Dio, Vertigo
57	59	8	BACK WITH THE BOYS AGAIN/GET IT RIGHT , Joe Fagin, Towerbell
58	48	4	IF YOU LEAVE , Orchestral Manoeuvres, Virgin
59	75	2	GIVE IT UP , Talk Talk, Parlophone
60	61	2	WICKED WAYS , Blow Monkeys, RCA
61	60	2	YOU CAN'T BLAME LOVE , Thomas And Taylor, Cooltempo
62	57	6	WHAT YOU NEED , INXS, Mercury
63	44	9	STROLLIN' ON , Maxi Priest, 10 Records
64	—	1	COMPUTER LOVE , Zapp, Warner Bros W8805
65	—	1	IF YOUR HEART ISN'T IN IT , Atlantic Starr, A&M AM319
66	40	7	DRIVING AWAY FROM HOME (JIM'S TUNE) , It's Immaterial, Siren
67	66	2	INTO THE MOTION , Cool Notes, Abstract Dance
68	38	6	STARS , Hear 'n' Aid, Vertigo
69	—	1	CANDYBAR EXPRESS , Love And Money, Mercury MONEY1
70	63	3	WHAT YOU GONNA DO ABOUT IT , Total Contrast, London
71	41	5	A QUESTION OF LUST , Depeche Mode, Mute
72	67	3	R.O.C.K. IN THE USA , John Cougar Mellencamp, Riva
73	52	7	SOME PEOPLE , Belouis Some, Parlophone
74	42	8	TRAIN OF THOUGHT , A-Ha, Warner Bros
75	56	4	IT ONLY TAKES A MINUTE , Tavares, Capitol

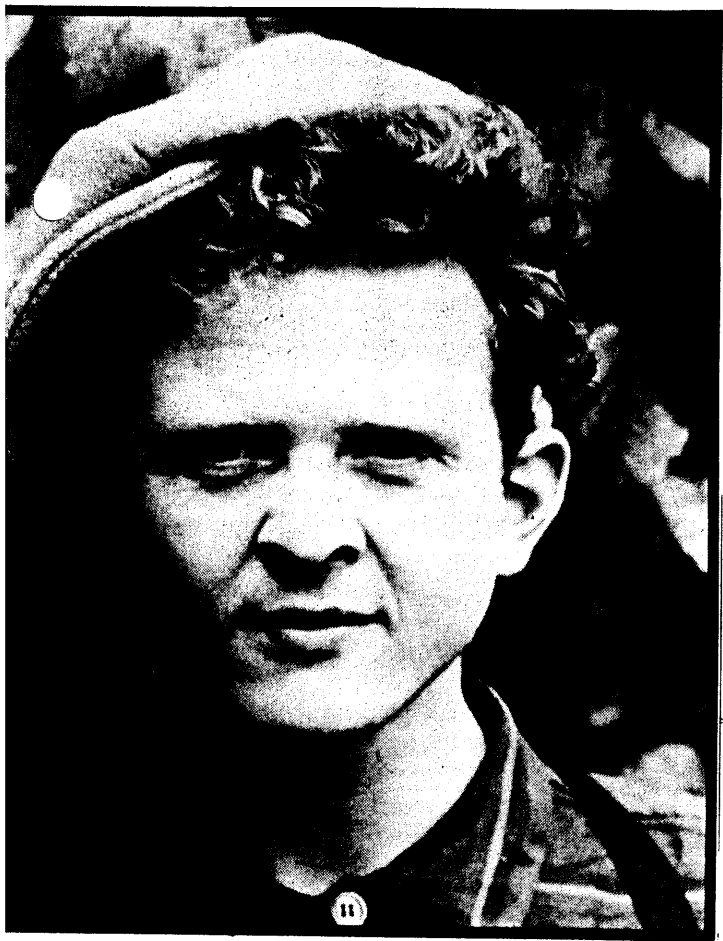
THE NEXT TWENTY FIVE

76	—		ON THE BEACH , Chris Rea, Magnet MAG294
77	—		AMITYVILLE (THE HOUSE ON THE HILL) , Lovebug Starski, Epic A7182
78	76		IT CAN BE DONE , Redskins, Decca
79	—		LET'S GO ALL THE WAY , Sly Fox, Capitol CL403
80	89		ALL I NEED IS A MIRACLE , Mike And The Mechanics, WEA
81	79		S.O.S. , Oliver Cheatham, Champion
82	97		NEW ROSE , Damned, Stiff
83	78		BORN TO ROCK 'N' ROLL , Cliff Richard, EMI
84	73		CHAIN REACTION , Diana Ross, Capitol
85	96		LONELINESS , Brendan Shine, Play
86	74		A NIGHT TO REMEMBER , Shalamar, Solar
87	87		LOVE'S GONNA GET YOU , Modern-Nique featuring Larry Woo, 10 Records
88	94		FIRE ON THE WATER , Chris De Burgh, A&M
89	—		THE PROMISE YOU MADE , Cock Robin, CBS A6764
90	93		THE GREAT TRAIN ROBBERY , Black Uhuru, Real Authentic Sound
91	—		PRIVATE LIFE , Grace Jones, Island IS273
92	—		(I'LL NEVER BE) MARIA MAGDALENA , Sandra, 10 Records TEN78
93	95		SUNSHINE , Imagination, R & B
94	—		WHAT'S MISSING , Alexander O'Neal, Tabu A7191
95	—		STAY , Controllers, MCA MCA1052
96	91		TO ALL THE MEN I'VE LOVED BEFORE , Shirley Bassey, Towerbell
97	90		DON'T YOU (FORGET ABOUT ME) , Simple Minds, Virgin
98	86		OH L'AMOUR , Erasure, Mute
99	84		ROBIN OF SHERWOOD (EP) , Clannad, RCA
100	80		LOVE IN YOUR EYES , Limahl, EMI

★ Platinum (one million sales) □ Gold (500,000 sales) ○ Silver (250,000 sales)

GALLUP UK ALBUMS

THIS WEEK	LAST WEEK	WEEKS IN CHART	
1	1	5	STREET LIFE — 20 GREAT HITS , Bryan Ferry/Roxy Music, EG
2	2	2	LOVE ZONE , Billy Ocean, Jive
3	4	53	BROTHERS IN ARMS , Dire Straits, Vertigo
4	3	24	WHITNEY HOUSTON , Whitney Houston, Arista
5	5	3	THE COLLECTION , Earth Wind And Fire, K-Tel
6	10	31	WORLD MACHINE , Level 42, Polydor
7	7	9	HITS 4 , Various, CBS/WEA/RCA
8	11	29	HUNTING HIGH AND LOW , A-Ha, Warner Bros
9	13	5	THE MAN AND HIS MUSIC , Sam Cooke, RCA
10	12	3	COMIC RELIEF: UTTERLY UTTERLY LIVE , Original TV Soundtrack, WEA
11	9	30	ONCE UPON A TIME , Simple Minds, Virgin
12	6	7	THE GREATEST HITS , Shalamar, Stylus
13	8	2	HOME AND ABROAD , Style Council, Polydor
14	50	12	PICTURE BOOK , Simply Red, Elektra
15	17	2	PRINCESS , Princess, Supreme
16	26	5	ON THE BEACH , Chris Rea, Magnet
17	27	2	LET'S HEAR IT FROM THE GIRLS , Various, Stylus
18	—	1	MOONLIGHT SHADOWS , Shadows, ProTv PROLP8
19	23	21	LUXURY OF LIFE , Five Star, Tent
20	15	2	SANDS OF TIME , SOS Band, Tabu
21	37	13	THE COLOUR OF SPRING , Talk Talk, EMI
22	—	1	RAISED ON RADIO , Journey, CBS CBS26902
23	18	8	PLEASE , Pet Shop Boys, Parlophone
24	22	8	5150 , Van Halen, Warner Bros





UK ALBUMS 94

- | | | | |
|----|----|-----|---|
| 25 | 14 | 65 | NO JACKET REQUIRED , Phil Collins, Virgin ☆ ☆ ☆ |
| 26 | 41 | 4 | GREATEST HITS , Marvin Gaye, Telstar □ |
| 27 | 24 | 2 | SECRET DREAMS AND FORBIDDEN FIRE , Bonnie Tyler, CBS |
| 28 | 19 | 7 | SUZANNE VEGA , Suzanne Vega, A&M ○ |
| 29 | 29 | 15 | WELCOME TO THE REAL WORLD , Mr Mister, RCA □ |
| 30 | 25 | 150 | QUEEN GREATEST HITS , Queen, EMI ☆ ☆ ☆ |
| 31 | 21 | 2 | DAVE CLARK'S TIME , Original Cast, EMI |
| 32 | 28 | 35 | HOUNDS OF LOVE , Kate Bush, EMI ☆ |
| 33 | 16 | 7 | HEART TO HEART , Various, K-Tel ○ |
| 34 | — | 1 | WINNER IN YOU , Patti LaBelle, MCA MCF3319 |
| 35 | 36 | 48 | LITTLE CREATURES , Talking Heads, EMI □ |
| 36 | — | 1 | SLEIGHT OF HAND , Joan Armatrading, A&M AMA5130 |
| 37 | 20 | 7 | RENDEZVOUS , Jean Michel Jarre, Polydor ○ |
| 38 | — | 1 | HEADED FOR THE FUTURE , Neil Diamond, CBS CBS26952 |
| 39 | 49 | 10 | THIS IS BIG AUDIO DYNAMITE , Big Audio Dynamite, CBS ○ |
| 40 | 31 | 55 | BE YOURSELF TONIGHT , Eurythmics, RCA ☆ ☆ ☆ |
| 41 | 33 | 6 | ANIMAL MAGIC , Blow Monkeys, RCA |
| 42 | 39 | 79 | LIKE A VIRGIN , Madonna, Sire ☆ ☆ ☆ |
| 43 | 61 | 5 | ALCHEMY , Dire Straits, Vertigo ☆ |
| 44 | 56 | 6 | HIPSWAY , Hipsway, Mercury |
| 45 | 44 | 64 | SONGS FROM THE BIG CHAIR , Tears For Fears, Mercury ☆ ☆ ☆ |
| 46 | 58 | 5 | CONTROL , Janet Jackson, A&M |
| 47 | 45 | 2 | SISTERS ARE DOIN' IT , Various, Towerbell |
| 48 | 59 | 3 | THE OTHER SIDE OF LIFE , Moody Blues, Polydor |
| 49 | 32 | 3 | TRUTHDARE DOUBLEDARE , Bronski Beat, Forbidden Fruit |
| 50 | 61 | 5 | IN VISIBLE SILENCE , Art Of Noise, China |
| 51 | 51 | 6 | AFTERBURNER , ZZ Top, Warner Bros □ |
| 52 | 46 | 11 | DIFFERENT LIGHT , Bangles, CBS |
| 53 | 34 | 59 | GO WEST , Go West, Chrysalis ☆ |
| 54 | 77 | 3 | STOP MAKING SENSE , Talking Heads, EMI □ |
| 55 | 42 | 11 | BALANCE OF POWER , Electric Light Orchestra, Epic |
| 56 | — | 1 | URBAN BEACHES , Cactus World News, MCA MCG6005 |
| 57 | 64 | 13 | RUMOURS , Fleetwood Mac, Warner Bros ☆ ☆ ☆ |
| 58 | 63 | 48 | THE DREAM OF THE BLUE TURTLES , Sting, A&M ☆ |
| 59 | 62 | 2 | BLUE SKIES , Kiri Te Kanawa/Nelson Riddle, London □ |
| 60 | 54 | 24 | ISLAND LIFE , Grace Jones, Island □ |
| 61 | 67 | 65 | RECKLESS , Bryan Adams, A&M ☆ |
| 62 | — | 1 | SO LUCKY , Rose Marie, AI RMLP2 |
| 63 | 71 | 22 | LOVE OVER GOLD , Dire Straits, Vertigo ☆ ☆ |
| 64 | 95 | 6 | JENNIFER RUSH , Jennifer Rush, CBS ☆ |
| 65 | 30 | 7 | PARADE , Prince And The Revolution, Warner Bros ○ |
| 66 | 35 | 12 | HITS FOR LOVERS , Various, Epic □ |
| 67 | 47 | 4 | MOVIN' , Jennifer Rush, CBS |
| 68 | 84 | 15 | SPARKLE IN THE RAIN , Simple Minds, Virgin □ |
| 69 | — | 1 | MISTRIAL , Lou Reed, RCA PL87190 |
| 70 | — | 1 | LOVE HURTS , Elaine Paige, WEA WX28 |
| 71 | — | 1 | BOYS DON'T CRY , Cure, Fiction SPELP26 |
| 72 | 86 | 25 | NOW THAT'S WHAT I CALL MUSIC 6 , Various, EMI/Virgin ☆ ☆ ☆ |
| 73 | 69 | 50 | FACE VALUE , Phil Collins, Virgin ☆ ☆ |
| 74 | 65 | 130 | UNDER A BLOOD RED SKY , U2, Island ☆ ☆ |
| 75 | 55 | 22 | MAKING MOVIES , Dire Straits, Vertigo ☆ ☆ |
| 76 | 93 | 135 | CAN'T SLOW DOWN , Lionel Richie, Motown ☆ ☆ ☆ |
| 77 | 89 | 11 | ALEXANDER O'NEAL , Alexander O'Neal, Tabu ○ |
| 78 | 81 | 102 | BORN IN THE USA , Bruce Springsteen, CBS ☆ ☆ ☆ |
| 79 | 48 | 5 | TINDERBOX , Siouxsie And The Banshees, Wonderland |
| 80 | 74 | 4 | RAPTURE , Anita Baker, Elektra |
| 81 | 66 | 17 | ROCKY IV , Original Soundtrack, Scotti Brothers □ |
| 82 | 52 | 6 | ROCK ANTHEMS 2 , Various, K-Tel |

- | | | | |
|-----|----|----|---|
| 83 | 38 | 8 | ABSOLUTE BEGINNERS , Original Soundtrack, Virgin ○ |
| 84 | 87 | 85 | THE UNFORGETTABLE FIRE , U2, Island ☆ |
| 85 | 85 | 8 | HEART , Heart, Capitol |
| 86 | 73 | 10 | HIS GREATEST HITS — NEW YORK NEW YORK , Frank Sinatra, Reprise ○ |
| 87 | 53 | 5 | VICTORIALAND , Cocteau Twins, 4AD |
| 88 | 43 | 7 | THE TV HITS ALBUM VOL 2 , Various, Towerbell |
| 89 | — | 1 | FIRST LADY OF SOUL , Aretha Franklin, Atlantic/Sty SMR8506 |
| 90 | — | 1 | DIRE STRAITS , Dire Straits, Vertigo 9102021 |
| 91 | 98 | 17 | SUDDENLY , Billy Ocean, Jive □ |
| 92 | 60 | 44 | THE FIRST ALBUM , Madonna, Sire ☆ |
| 93 | — | 1 | SPORTS , Huey Lewis And The News, Chrysalis CHR1412 |
| 94 | 99 | 2 | BOAT TO BOLIVIA , Martin Stephenson/Daintees, Kitchenware |
| 95 | 75 | 8 | DIRTY WORK , Rolling Stones, Rolling Stones/CBS □ |
| 96 | 57 | 14 | EATEN ALIVE , Diana Ross, Capitol |
| 97 | — | 1 | RIPTIDE , Robert Palmer, Island ILPS9801 |
| 98 | 83 | 2 | THE FINAL FRONTIER , Keel, Vertigo |
| 99 | — | 1 | PRIVATE DANCER , Tina Turner, Capitol TINA1 |
| 100 | 97 | 23 | FINE YOUNG CANNIBALS , Fine Young Cannibals, London □ |

☆☆☆ Triple Platinum (900,000 sales) ☆☆ Double Platinum (600,000 sales)
 ☆ Platinum (300,000 sales) □ Gold (100,000 sales) ○ Silver (60,000 sales)

COMPACT DISCS

- | | | |
|----|----|--|
| 1 | 1 | STREET LIFE , Bryan Ferry/Roxy Music, EG/Polydor |
| 2 | 2 | BROTHERS IN ARMS , Dire Straits, Vertigo/Phonogram |
| 3 | 5 | WHITNEY HOUSTON , Whitney Houston, Arista |
| 4 | — | HOME AND ABROAD , the Style Council, Polydor |
| 5 | — | ON THE BEACH , Chris Rea, Magnet |
| 6 | 4 | RENDEZVOUS , Jean-Michel Jarré, Dreyfus/Polydor |
| 7 | 3 | NO JACKET REQUIRED , Phil Collins, Virgin |
| 8 | — | THE VERY BEST OF MARVIN GAYE , Marvin Gaye, RCA |
| 9 | 19 | WELCOME TO THE REAL WORLD , Mr Mister, RCA |
| 10 | 6 | WORLD MACHINE , Level 42, Polydor |
| 11 | 15 | SUZANNE VEGA , Suzanne Vega, A&M |
| 12 | 8 | LOVE OVER GOLD , Dire Straits, Vertigo/Phonogram |
| 13 | — | HIPSWAY , Hipsway, Mercury/Phonogram |
| 14 | 12 | ISLAND LIFE , Grace Jones, Island |
| 15 | 13 | BE YOURSELF TONIGHT , Eurythmics, RCA |
| 16 | 9 | THE OTHER SIDE OF LIFE , the Moody Blues, Threshold/Polydor |
| 17 | 16 | TINDERBOX , Siouxsie And The Banshees, Wonderland/Polydor |
| 18 | — | LIVES IN THE BALANCE , Jackson Browne, Asylum |
| 19 | 18 | THE COLOUR OF SPRING , Talk Talk, EMI |
| 20 | — | MIKE + THE MECHANICS , Mike + The Mechanics, WEA |

Compiled by Spotlight Research

TWELVE INCH

- | | | |
|----|----|--|
| 1 | 1 | LESSONS IN LOVE , Level 42, Polydor |
| 2 | 4 | SLEDGEHAMMER , Peter Gabriel, Virgin |
| 3 | 3 | ON MY OWN , Patti LaBelle And Michael McDonald, MCA |
| 4 | 7 | ALL AND ALL , Joyce Sims, London |
| 5 | 2 | ROCK ME AMADEUS , Falco, A&M |
| 6 | 5 | THE CHICKEN SONG/I'VE NEVER MET A NICE SOUTH AFRICAN , Spitting Image, Virgin |
| 7 | 13 | SPIRIT IN THE SKY , Doctor And The Medics, IRS |
| 8 | — | MINE ALL MINE/PARTY FREAK , Cashflow, Club/PRO/POL JABX30 |
| 9 | 6 | LIVE TO TELL , Madonna, Sire |
| 10 | 15 | ROCK LOBSTER , B-52's, Island |
| 11 | 17 | WHY CAN'T THIS BE LOVE , Van Halen, Warner Bros |
| 12 | 9 | YOU AND ME TONIGHT , Aurra, 10 Records |
| 13 | — | I CAN'T WAIT , Nu Shooz, Atlantic A9446T |
| 14 | — | WHO MADE WHO , AC/DC, Atlantic A9425T |
| 15 | 8 | WHAT HAVE YOU DONE FOR ME LATELY? , Janet Jackson, A&M |
| 16 | — | SET ME FREE , Jaki Graham, EMI I2JAKIX7 |
| 17 | — | ADDICTED TO LOVE , Robert Palmer, Island I2IS27O |
| 18 | 20 | BASSLINE , Mantronix, 10 Records |
| 19 | 12 | I'LL KEEP ON LOVING YOU , Princess, Supreme |
| 20 | 10 | CAN'T WAIT ANOTHER MINUTE , Five Star, Tent |

"ONE BASTARD GOES IN
& ANOTHER COMES OUT"

MEDICINE SHOW